



Salisbury Mews , Westcliff-on-Sea SS0 7FP

- Two-bedroom end terrace house
- Private garden with patio area
 - Modern family bathroom
 - Located in Salisbury Mews
- Option to buy 100% for £300,000
- Bright living room with French doors
 - Contemporary fitted kitchen
 - 35% Shared Ownership
- Shared ownership scheme available
 - Viewing highly recommended

35% Shared Ownership £105,000 Leasehold



Location

Kitchen/dining

14'4 x 12'1

Living room

13'1 x 12'1

W/C

5'2 X 4'5

Bedroom 1

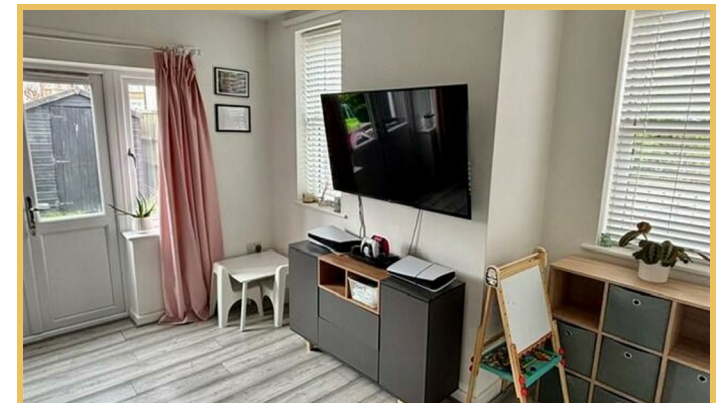
14'4 x 14'1

Bedroom 2

13'1 x 9'5

Bathroom





Local Authority
Council Tax Band **C**
EPC Rating **C**



Sales Office
190 London Road
Southend-On-Sea
Essex
SS1 1PJ

Contact
01702 34 11 77
<https://hairandson.co.uk/>

Agents Note: Whilst every care has been taken to prepare these particulars, they are for guidance purposes only. All measurements are approximate and for general guidance purposes only and whilst every care has been taken to ensure accuracy, they should not be relied upon and potential buyers/tenants are advised to recheck the measurements.

