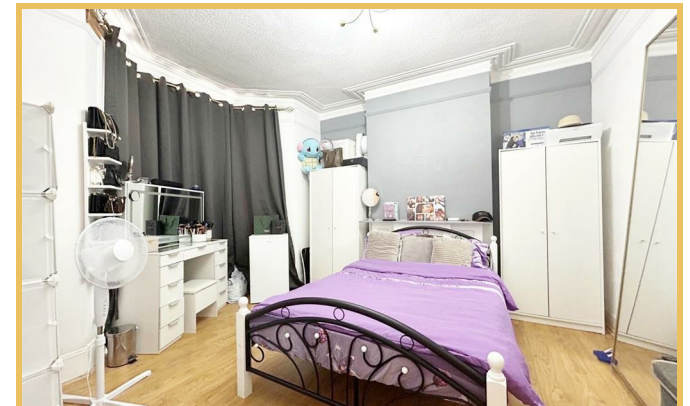
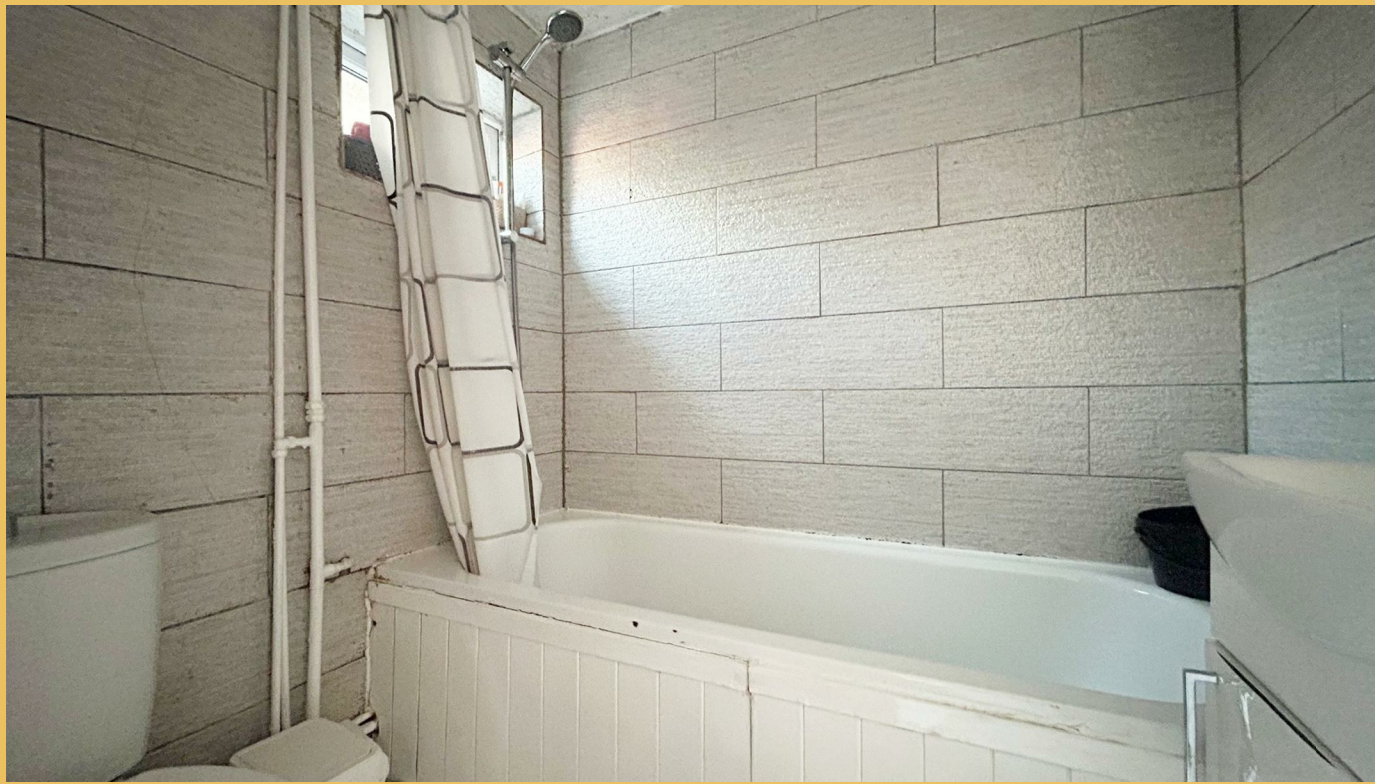




Selkirk Road
London SW17 0EP

Auction Guide £650,000 Freehold





Location

ACCOMMODATION:

Ground Floor:

Lounge:

14' into bay x 12'4 max

Kitchen:

10' x 9'6 max

Bedroom:

11' x 9'6 min

Bedroom:

9'7 x 5'1

Bathroom/WC

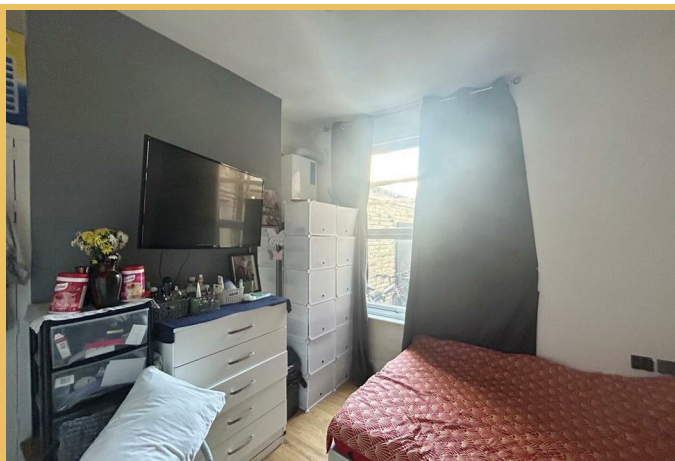
Utility / Lean-To:

15'8 x 10'7 red to 8'11

Externally:

Rear Garden with Shed

Cella



First Floor:

Landing

Lounge:

16' x 11'8

Kitchen:

11'8 x 9'

Bedroom:

11'3 x 10'10

Bathroom

Separate WC

AGENTS NOTE:

At present Hair & Son have not been able to inspect, measure or photograph the first floor accommodation

TENURE:

Freehold

TENANCY:

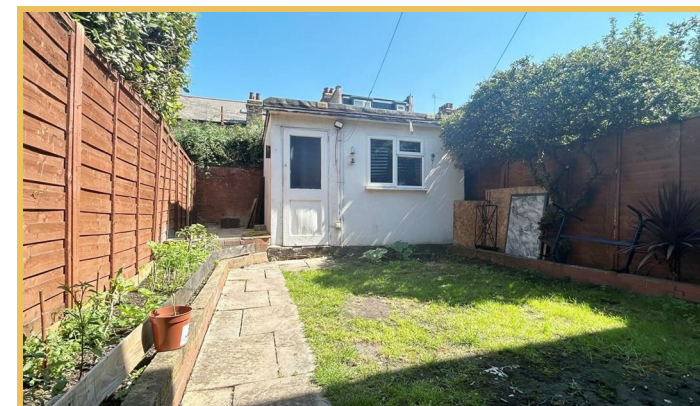
We understand that the ground floor and first floor are let separately and that the ground floor tenant pays a rent of £1,650pcm and that the first floor tenant pays a rent of £1,500 pcm

ENERGY PERFORMANCE RATING:

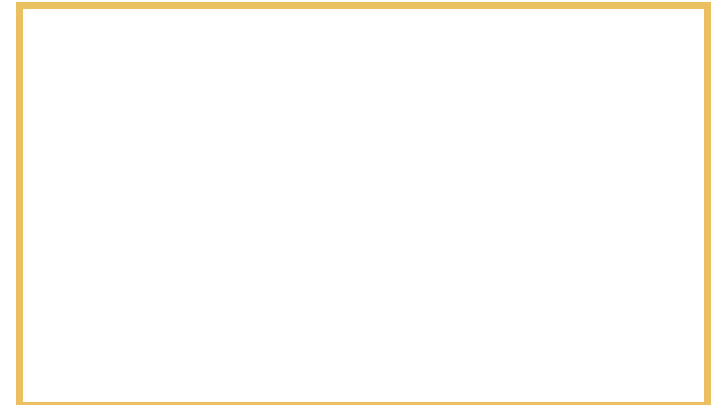
Ground floor - D / Top Floor - D

VIEWING:

By appointment with the Auctioneers



Local Authority
Council Tax Band **C**
EPC Rating **D**



Sales Office
190 London Road
Southend-On-Sea
Essex
SS1 1PJ

Contact
01702 34 11 77
<https://hairandson.co.uk/>

Agents Note: Whilst every care has been taken to prepare these particulars, they are for guidance purposes only. All measurements are approximate and for general guidance purposes only and whilst every care has been taken to ensure accuracy, they should not be relied upon and potential buyers/tenants are advised to recheck the measurements.