

HS HAIR & SON

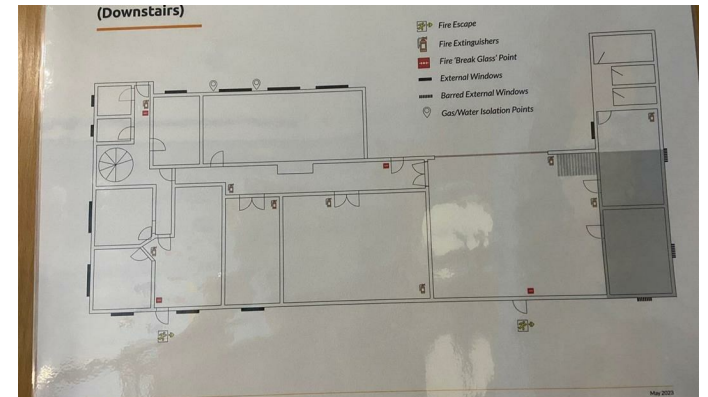
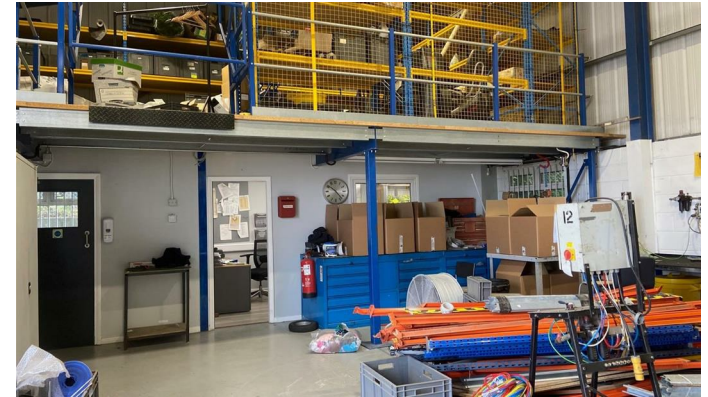
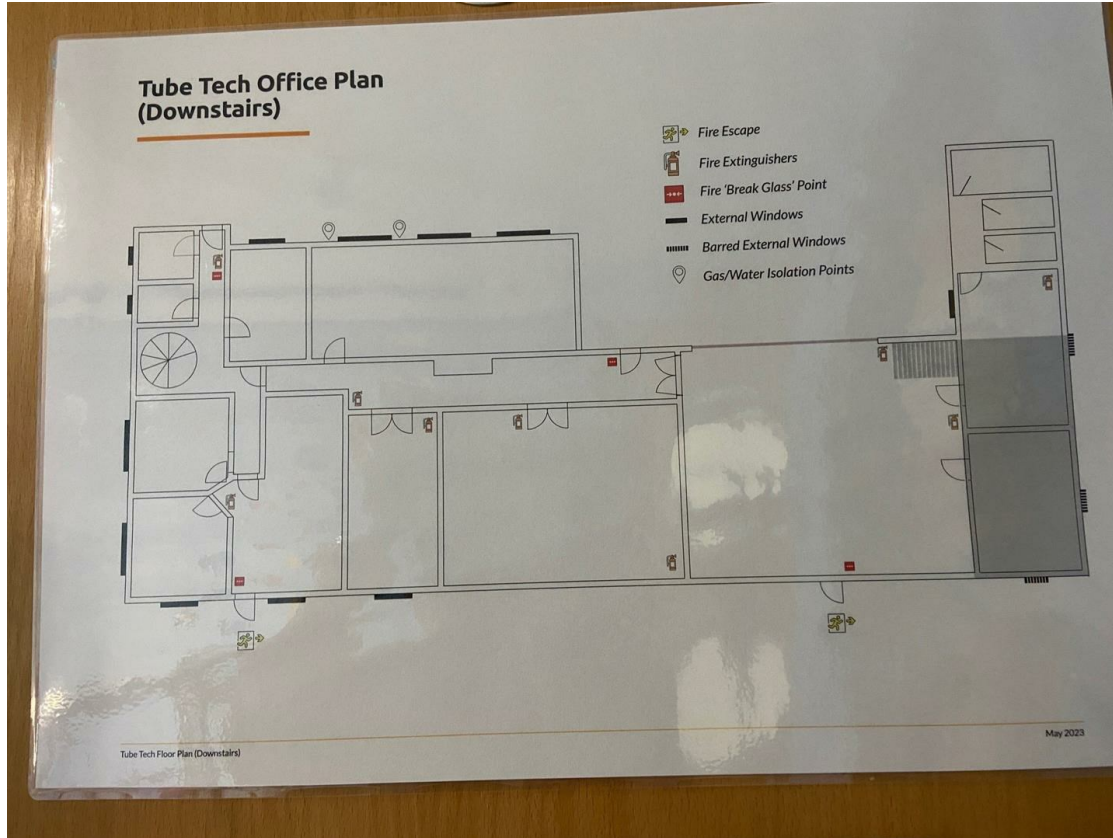


Rawreth Lane
, Rayleigh SS6 9RL

£86,000 Per Annum



Local Authority
Council Tax Band **Exempt**
EPC Rating



Commercial Office
190 London Road, Southend-On-Sea,
Essex, SS1 1PJ

Contact
01702 394959
<https://hairandson.co.uk/>

Agents Note: Whilst every care has been taken to prepare these particulars, they are for guidance purposes only. All measurements are approximate and for general guidance purposes only and whilst every care has been taken to ensure accuracy, they should not be relied upon and potential buyers/tenants are advised to recheck the measurements.