

**HS HAIR & SON**



## Stadium Road

, Southend-on-Sea SS2 5DH

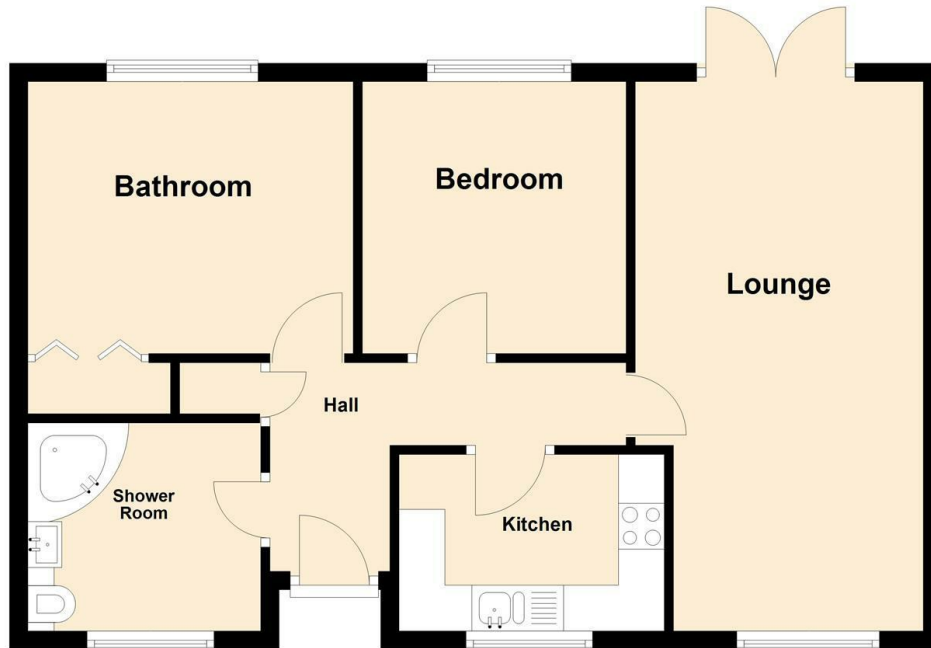
- TWO GOOD SIZE BEDROOMS
- COMPLETELY SELF CONTAINED
- ACCESS TO ITS OWN SECLUDED GARDEN AREA
- CHAIN FREE
- INDEPENDANT LIVING FOR THE OVER 60's
- 24 HOUR EMERGENCY PULL CODES
- BOOKABLE GUEST ROOM, HAIR SALON & LAUNDRY ROOM
- BEAUTIFULLY KEPT THROUGHOUT

Guide Price £150,000 Leasehold

Local Authority **Southend on Sea Borough Council**  
Council Tax Band **C**  
EPC Rating **D**

### Ground Floor

Approx. 57.5 sq. metres (618.8 sq. feet)



Total area: approx. 57.5 sq. metres (618.8 sq. feet)

**Sales Rayleigh Office**  
6 High Street, Rayleigh, Essex, SS6 7EF

**Contact**  
01268 774316  
<https://hairandson.co.uk/>

Agents Note: Whilst every care has been taken to prepare these particulars, they are for guidance purposes only. All measurements are approximate and for general guidance purposes only and whilst every care has been taken to ensure accuracy, they should not be relied upon and potential buyers/tenants are advised to recheck the measurements.

