



Palmerston Road
Westcliff-On-Sea SS0 7TB

£95,000 Leasehold





Location

ACCOMMODATION:

Communal Entrance Hall
- stairs rising to top floor

Bedroom (L-Shaped)
9'6 x 8'8 plus 5'4 x 4'9

Shower Room

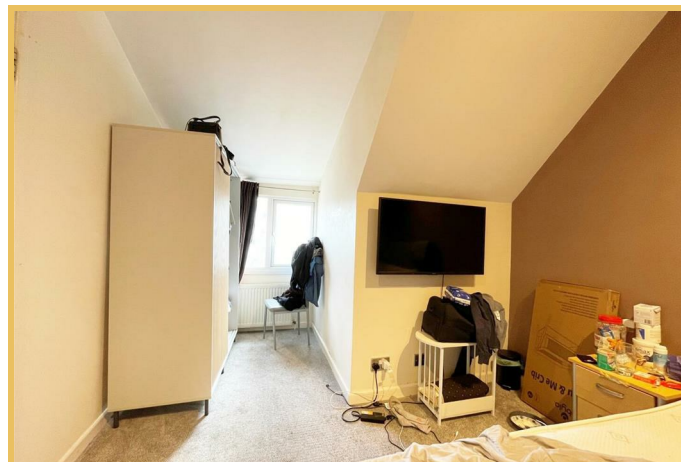
Kitchen
8'5 max > 5'9 x 7'6 max

Lounge
13'6 x 11'8 max

- door to:
Balcony - with Estuary Views

VIEWING:

Strictly by appointment with the Auctioneers



SERVICE CHARGE/RENT:

Please refer to the legal pack for details of any service / maintenance charges, ground rent and other costs that may be applicable to this property

AGENTS NOTE:

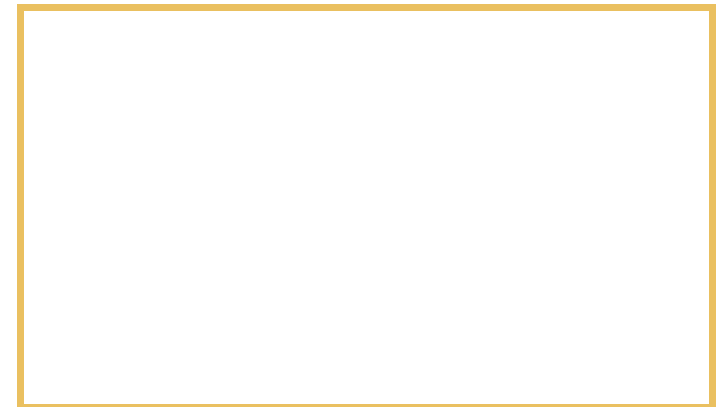
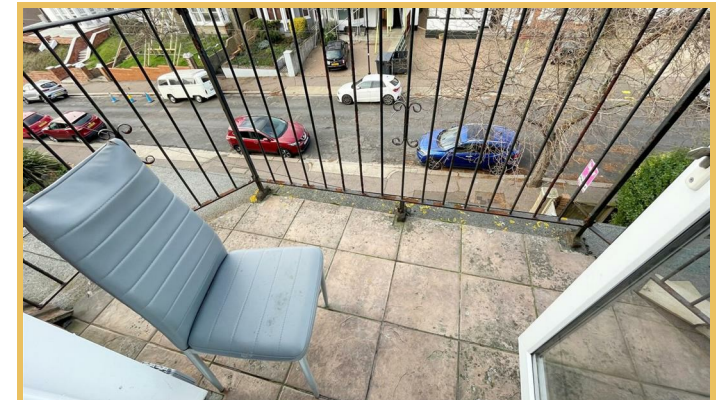
The property is subject to a Selective Licensing Scheme run by Southend-on-Sea City Council. Please visit their website or call them on 01702 212220 for further details

TENURE:

Leasehold: 99 years from 1st April 1979

TENANCY:

The property is to be sold with the tenant in situ. We have been advised that it is currently let at a rate of £825pcm (£9,900 per annum)



Local Authority
Council Tax Band **A**
EPC Rating **D**



Sales Office
190 London Road
Southend-On-Sea
Essex
SS1 1PJ

Contact
01702 34 11 77
<https://hairandson.co.uk/>

Agents Note: Whilst every care has been taken to prepare these particulars, they are for guidance purposes only. All measurements are approximate and for general guidance purposes only and whilst every care has been taken to ensure accuracy, they should not be relied upon and potential buyers/tenants are advised to recheck the measurements.

