



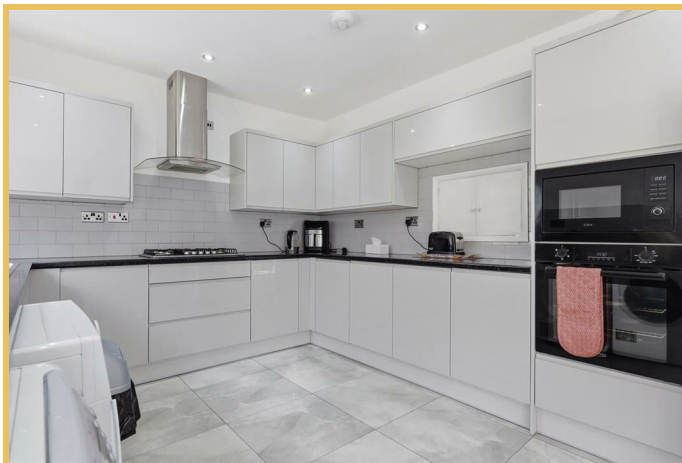
Prince Avenue , Westcliff-on-Sea SS0 0NN

- Mid terrace house
- Modern kitchen and dining space
- Large living room area
- Includes a garage
- Close to Southend Hospital
- Three spacious bedrooms
- lovely bathroom and w/c
- Off-road parking available
- Rear garden with shed
- Near Highly regarded Westcliff and Southend Grammar Schools

Guide Price £375,000 Freehold

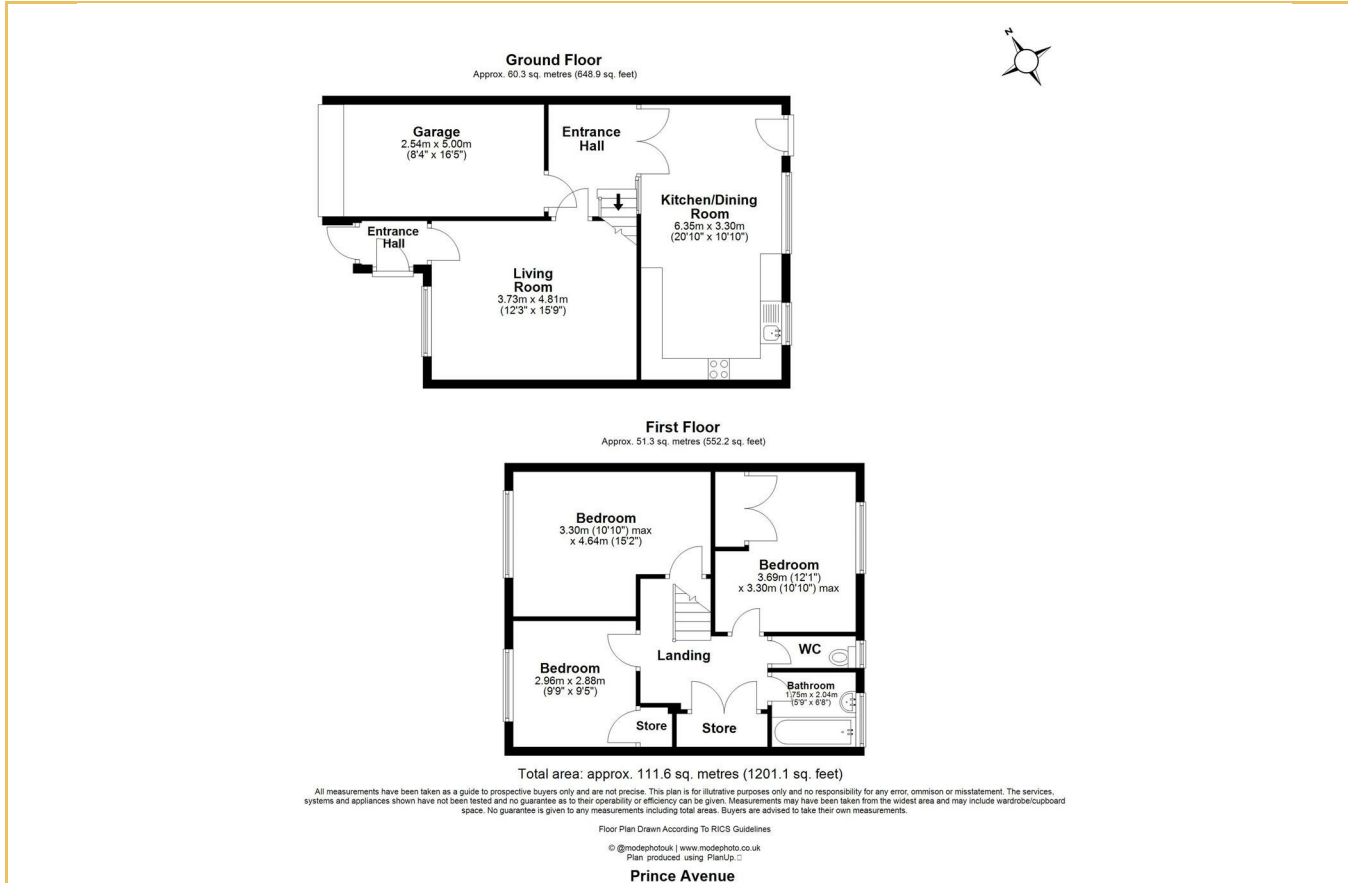


Location





Local Authority **Southend-on-Sea**
 Council Tax Band **C**
 EPC Rating **C**



Sales Office
 190 London Road
 Southend-On-Sea
 Essex
 SS1 1PJ

Contact
 01702 34 11 77
<https://hairandson.co.uk/>

Agents Note: Whilst every care has been taken to prepare these particulars, they are for guidance purposes only. All measurements are approximate and for general guidance purposes only and whilst every care has been taken to ensure accuracy, they should not be relied upon and potential buyers/tenants are advised to recheck the measurements.