



## Stadium Road , Southend-On-Sea SS2 5DH

- One bedroom first floor flat
- Modern kitchen and bathroom
- Communal gardens for residents
  - No onward chain
- Bookable Guest Room, Launderette And A Salon
- Popular retirement block in central Southend
  - Two resident car parks available
  - Walking distance to city centre
  - Presented to a modern standard
  - Over 60s Living

**£115,000 Leasehold**

**Location****Hall****Lounge**

15'4 x 10'5

**Kitchen**

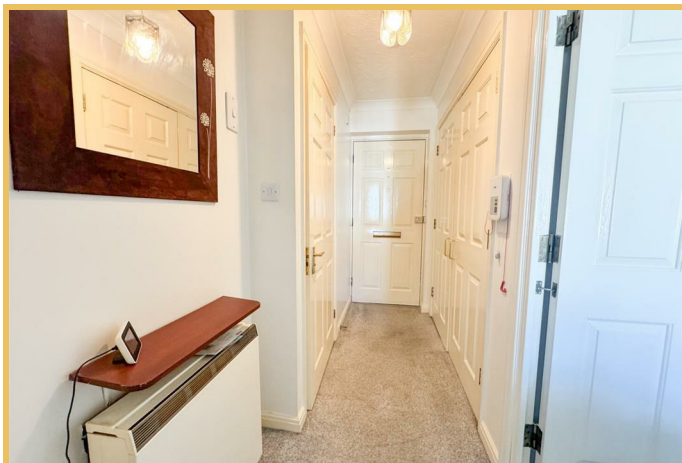
8'3 x 7'6

**Bedroom**

12'0 x 9'1

**Bathroom**

These particulars are accurate to the best of our knowledge but do not constitute an offer or contract. Photos are for representation only and do not imply the inclusion of fixtures and fittings. The floor plans are not to scale and only provide an indication of the layout.

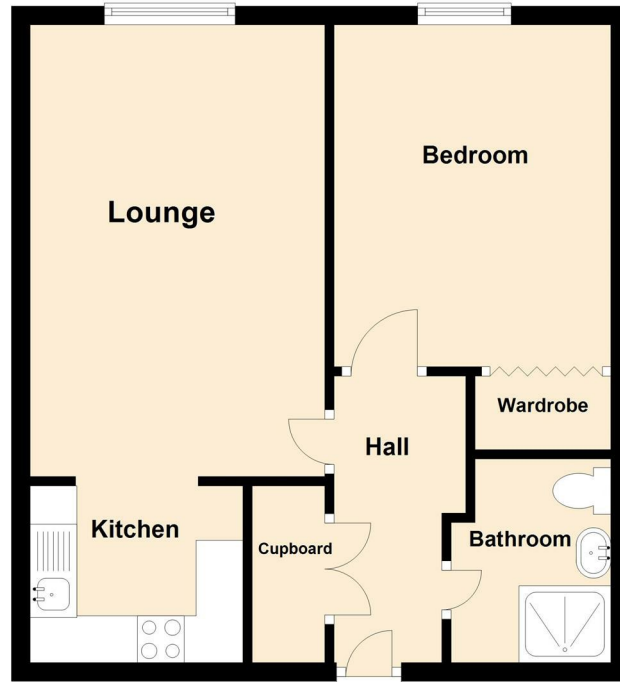




Local Authority  
Council Tax Band **C**  
EPC Rating **B**

**First Floor**

Approx. 42.4 sq. metres (456.6 sq. feet)



Total area: approx. 42.4 sq. metres (456.6 sq. feet)

**Sales Office**  
190 London Road  
Southend-On-Sea  
Essex  
SS1 1PJ

**Contact**  
01702 34 11 77  
<https://hairandson.co.uk/>

Agents Note: Whilst every care has been taken to prepare these particulars, they are for guidance purposes only. All measurements are approximate and for general guidance purposes only and whilst every care has been taken to ensure accuracy, they should not be relied upon and potential buyers/tenants are advised to recheck the measurements.

