



Hadleigh Road, Westcliff-on-Sea Guide Price £255,000 Share of Freehold

- First floor flat
- 50% share of freehold
- Close to Westcliff seafront and Hamlet Court Road
- Viewing recommended
- Two bedrooms
- Own section of rear garden
- No onward chain
- Large living room at front





Hair & Son are pleased to present this two bedroom first floor flat, offered with your own section of the rear garden and a 50% Share of the freehold.

The property is accessed via a communal entrance and then through your own front door which leads to the first floor. The property comprises of two well proportioned bedrooms, a spacious living room to the front, a fitted kitchen and a bathroom suite featuring a bathtub, wash hand basin and w/c.



Conveniently located, the flat is just a short stroll from the picturesque Westcliff seafront, where you can enjoy scenic walks along the coast. The vibrant Hamlet Court Road is also nearby, offering a variety of shops, cafes, and amenities to cater to your everyday needs.



This property is offered with no onward chain, making it an ideal choice for those looking to move in swiftly. While some modernisation is required, the flat is entirely liveable, allowing you to settle in comfortably while you plan your updates. This is a fantastic opportunity to secure a lovely home in a sought-after location, so do not miss out on the chance to make it your own.

Hallway

Lounge

16'2 x 12'6

Bedroom 1

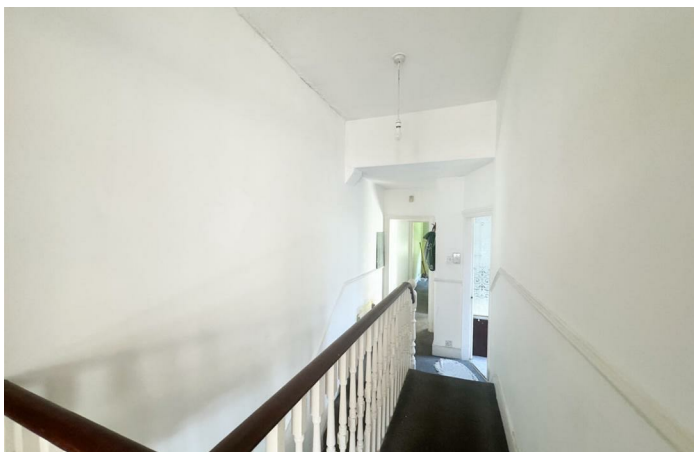
12'2 x 12'2

Bedroom 2

11'0 x 9'5

Kitchen

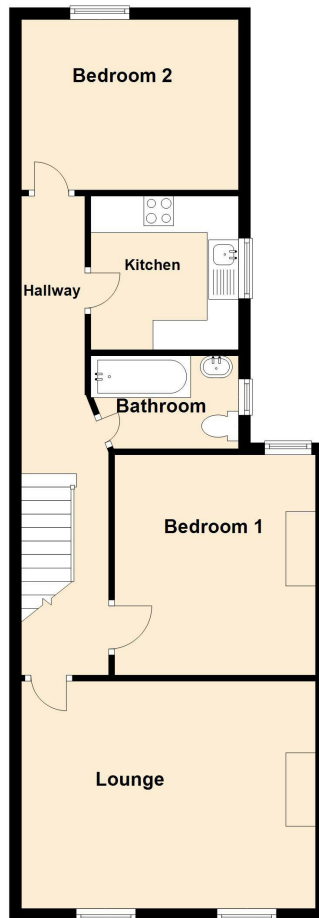
8'6 x 7'9





First Floor

Approx. 64.5 sq. metres (694.0 sq. feet)



Total area: approx. 64.5 sq. metres (694.0 sq. feet)

Sales Office

190 London Road, Southend-On-Sea,
Essex, SS1 1PJ

Contact

01702 34 11 77

<https://hairandson.co.uk/>

Agents Note: Whilst every care has been taken to prepare these particulars, they are for guidance purposes only. All measurements are approximate and for general guidance purposes only and whilst every care has been taken to ensure accuracy, they should not be relied upon and potential buyers/tenants are advised to recheck the measurements.