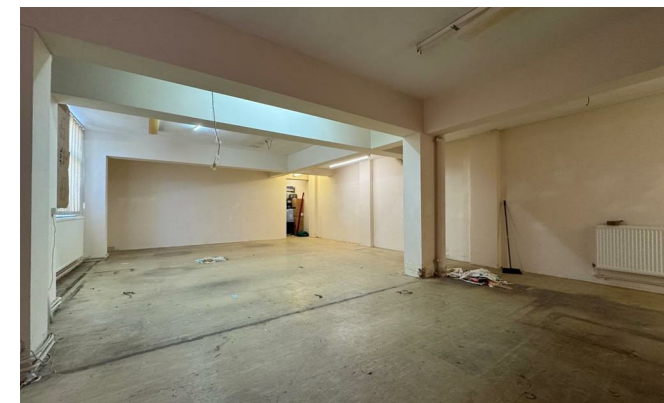


HS HAIR & SON

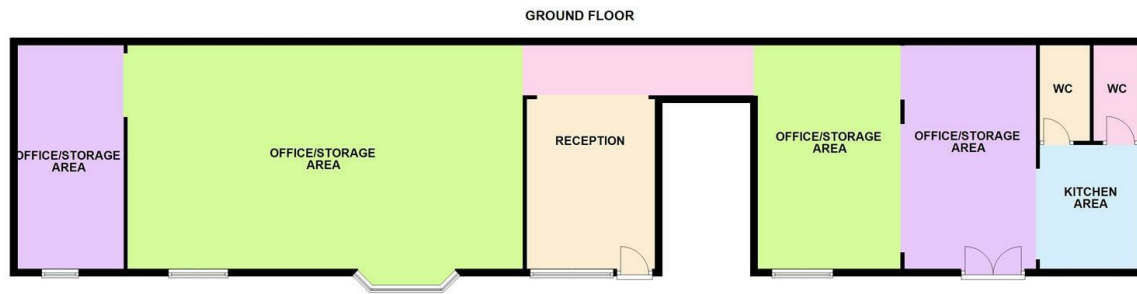
HS HAIR & SON



Grainger Road
Southend-on-Sea SS2 5BZ

£13,500 Per Annum

Local Authority
Council Tax Band
EPC Rating



1 CARLTON COURT, GRANGER ROAD, SOUTHEND-ON-SEA

Commercial Office
190 London Road, Southend-On-Sea,
Essex, SS1 1PJ

Contact
01702 394959
<https://hairandson.co.uk/>

Agents Note: Whilst every care has been taken to prepare these particulars, they are for guidance purposes only. All measurements are approximate and for general guidance purposes only and whilst every care has been taken to ensure accuracy, they should not be relied upon and potential buyers/tenants are advised to recheck the measurements.