

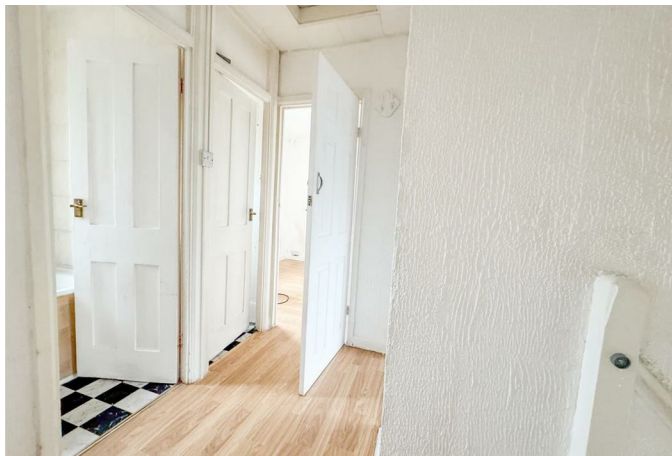
HS HAIR & SON



Browning Avenue, Southend-on-Sea

Guide Price £340,000 Freehold

- ENTIRE FREEHOLD PURCHASE
- VACANT POSSESSION
- POTENTIAL FOR EXTENSION
- CLOSE TO SOUTHEND CITY CENTRE
- CASH OR SPECIALISED FINANCE ONLY
- ONE BEDROOM AND TWO BEDROOM FLATS
- LARGE CAR PARKING AREA
- GAS CENTRAL HEATING
- NO ONWARD CHAIN
- DEVELOPMENT POTENTIAL



An entire freehold purchase that includes two flats, a large car parking area, and a garden to the front and rear.

The ground floor flat is a one bedroom property, the first floor flat has two bedrooms. They are both in need of some modernisation throughout.

The property is to be purchased with vacant possession.

Externally the property has a good plot size, with the potential of being able to extend the property to the side, which would of course be subject to all necessary consents

We believe this would be a great acquisition for investors who are looking for an unbroken freehold.

GROUND FLOOR FLAT:

HALL

KITCHEN
8'11" x 8'8"

LOUNGE
16'4" x 10'9"

BEDROOM
10'6" x 8'9"

BATHROOM

FIRST FLOOR FLAT:

HALL.

LOUNGE/KITCHEN
17'6" x 10'9"

BEDROOM ONE
12'3" x 10'8"

BEDROOM TWO
8'8" x 8'4"

BATHROOM.

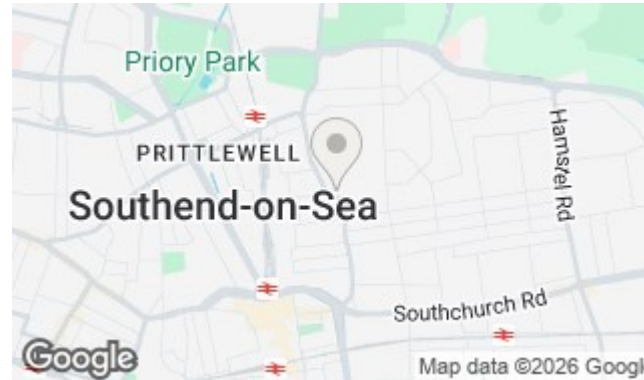
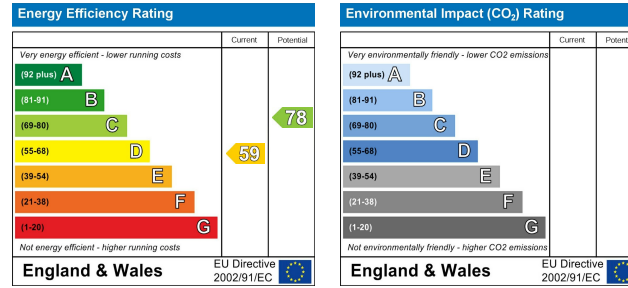
WC

CAR PARKING AREA

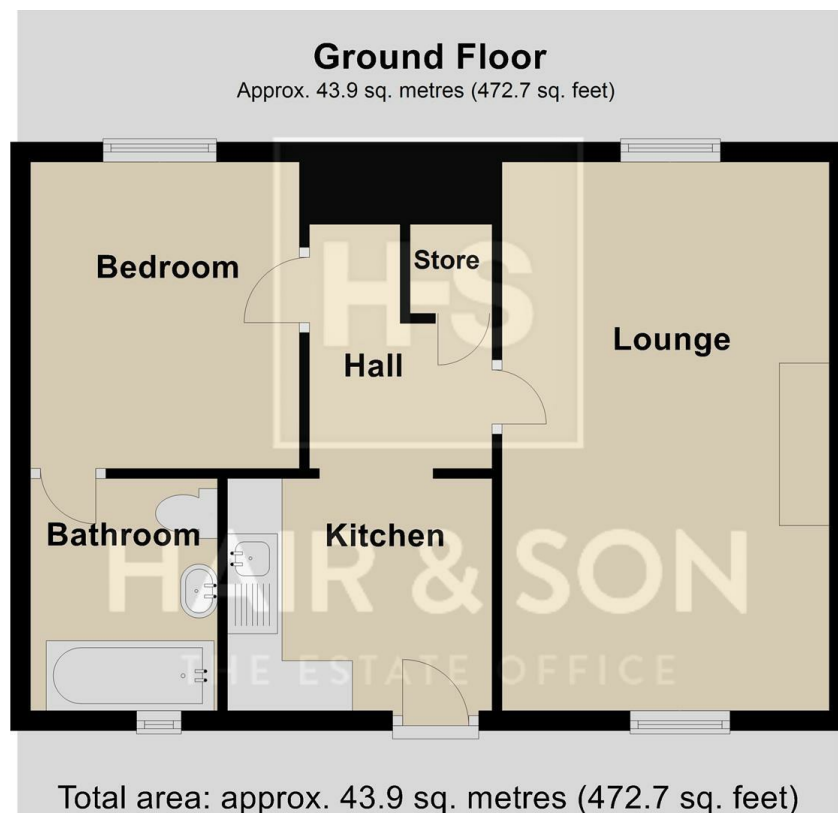
GARDEN

SHED (STORAGE)

These particulars are accurate to the best of our knowledge but do not constitute an offer or contract. Photos are for representation only and do not imply the inclusion of fixtures and fittings. The floor plans are not to scale and only provide an indication of the layout.



Local Authority **Southend on Sea Borough Council**
Council Tax Band **A**
EPC Rating **D**



Sales Office

190 London Road, Southend-On-Sea,
Essex, SS1 1PJ

Contact

01702 34 11 77
<https://hairandson.co.uk/>

Agents Note: Whilst every care has been taken to prepare these particulars, they are for guidance purposes only. All measurements are approximate and for general guidance purposes only and whilst every care has been taken to ensure accuracy, they should not be relied upon and potential buyers/tenants are advised to recheck the measurements.