

## Rayleigh Drive , Leigh-on-Sea SS9 4JF

- SEMI-DETACHED BUNGALOW
- IN NEED OF SOME MODERNISATION
  - OFF ROAD PARKING
- SHORT DRIVE IN TO LEIGH BROADWAY AND EASY ACCESS TO THE A127
- TWO DOUBLE BEDROOMS
- LOVELY REAR GARDEN
- GAS CENTRAL HEATING
- NO ONWARD CHAIN

**Guide Price £350,000 Freehold**



## Location

**\*\*BACK TO MARKET\*\* (7/5/26)\*\***

Hair & Son are pleased to present this two bedroom semi-detached bungalow in Leigh-On-Sea, a perfect chance for first time buyers or those who are looking to downsize.

The bungalow offers two double bedrooms with the main bedroom located at the front of the property.

You will also find the bathroom which comprises of a four piece suite, including a low level w/c, a wash hand basin, a panelled bathtub and a corner shower.

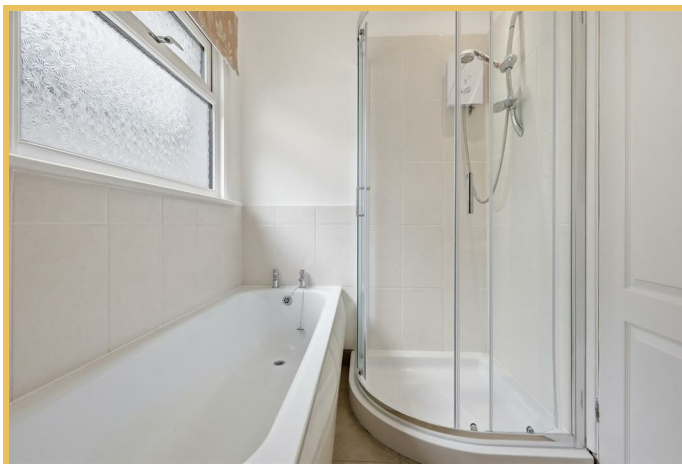
The kitchen has recently been fitted with new worktops and features space for appliances.

To the very rear of the property you have a spacious living room/dining area that looks out to the rear garden..

The garden is a mixture of a paved patio area, with steps that lead to grass laid to lawn, the garden also houses a shed which is great for storage. To the front of the property you have a driveway suitable for two cars.

Offered to the market with vacant possession, therefore no onward chain.

**HALL**



**LOUNGE/DINING ROOM**

20'5" x 11'8"

**BEDROOM ONE**

14'3" x 11'6"

**BEDROOM TWO**

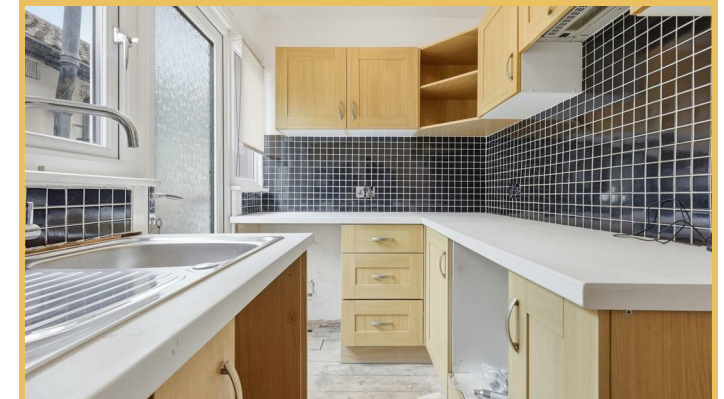
12'10" x 10'6"

**KITCHEN**

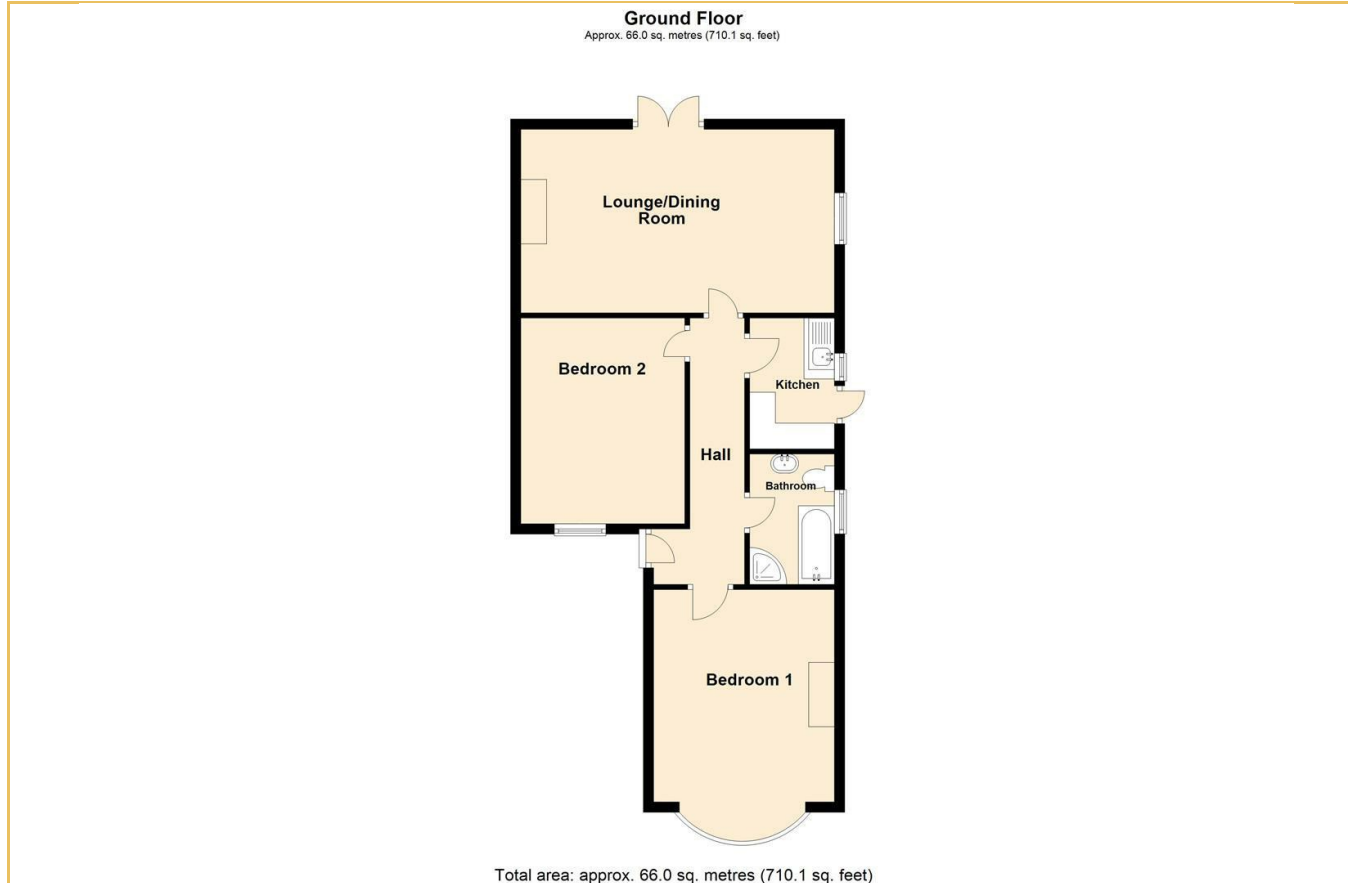
9'3" x 5'8"

**BATHROOM****GARDEN****OFF ROAD PARKING**

These particulars are accurate to the best of our knowledge but do not constitute an offer or contract. Photos are for representation only and do not imply the inclusion of fixtures and fittings. The floor plans are not to scale and only provide an indication of the layout.



Local Authority **Southend on Sea Borough Council**  
Council Tax Band **C**  
EPC Rating **D**



**Sales Office**  
190 London Road  
Southend-On-Sea  
Essex  
SS1 1PJ

**Contact**  
01702 34 11 77  
<https://hairandson.co.uk/>

Agents Note: Whilst every care has been taken to prepare these particulars, they are for guidance purposes only. All measurements are approximate and for general guidance purposes only and whilst every care has been taken to ensure accuracy, they should not be relied upon and potential buyers/tenants are advised to recheck the measurements.

