

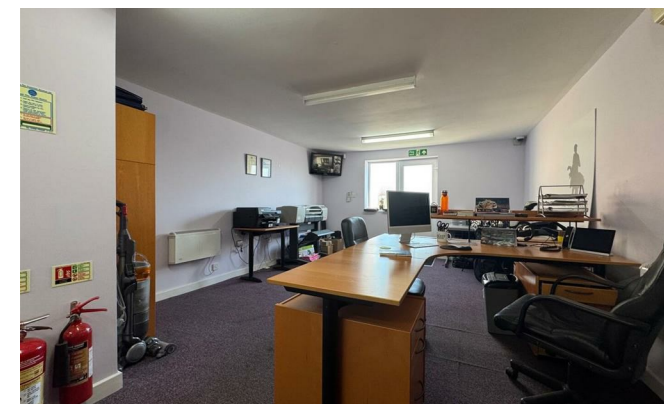
HS HAIR & SON



Office & Yard R/o 333 London Road, Hadleigh, Essex

£12,500 Per Annum

- Ground floor office space
- Secure gated yard
- Separate storage area
- Located on London Road



- Ground floor office space
- Separate storage area
- Secure gated yard
- Located on London Road

A Lock up ground floor office including a small kitchenette and W/C with carpeted floor and UPVC double glazed windows throughout. The premises further benefits from a lock up unit alongside providing 375 SQ.FT (35 SQ.M) of additional storage space with an electrically operated roller shutter door, as well as a securely gates external yard measuring in at an approximate total of 978 SQ.FT (91 SQ.M).

Located to the rear of 333 London Road, Hadleigh, Benfleet, this industrial unit presents an excellent opportunity for office & storage space with a secure gated yard. The property features a well-appointed ground floor office. The office area is complemented by a separate storage section with an electrically operated roller shutter providing easy access for deliveries. The secure gated yard offers additional external storage & parking.

The location on London Road is advantageous, providing excellent visibility and accessibility for both clients and suppliers. This unit is perfect for a variety of business needs, whether you are looking to expand your current operations or for a business start up.

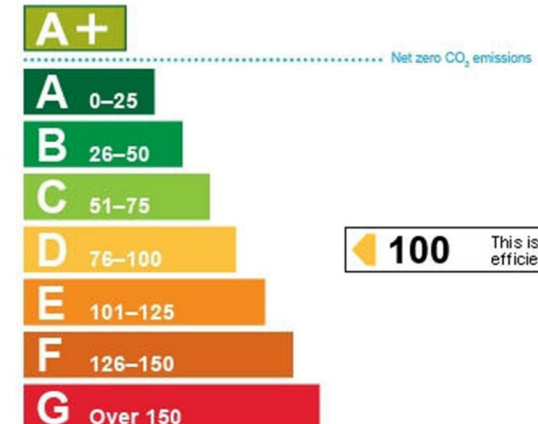
With its practical layout and secure facilities, this property is a fantastic choice for those in search of a functional and accessible industrial space in Hadleigh. Don't miss the chance to make this unit the new home for your business.



GROUND FLOOR



R/O 333 LONDON ROAD, HADLEIGH



Commercial Office

190 London Road, Southend-On-Sea,
Essex, SS1 1PJ

Contact

01702 394959

<https://hairandson.co.uk/>

Agents Note: Whilst every care has been taken to prepare these particulars, they are for guidance purposes only. All measurements are approximate and for general guidance purposes only and whilst every care has been taken to ensure accuracy, they should not be relied upon and potential buyers/tenants are advised to recheck the measurements.