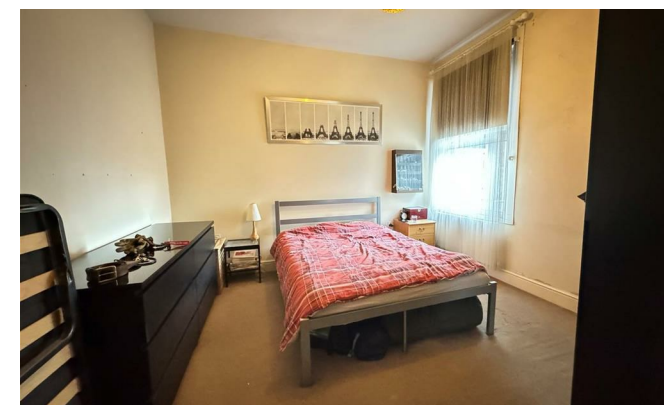


**HS HAIR & SON**



## Woodgrange Drive , Southend-on-Sea SS1 2SD

- FIRST FLOOR FLAT
- 199 YEAR LEASE
- OFF ROAD PARKING
- LOCATED CLOSE TO CITY CENTRE AND SOUTHEND EAST TRAIN STATION
- TWO BEDROOMS
- OPEN PLAN KITCHEN/LIVING ROOM
- GAS CENTRAL HEATING
- NO ONWARD CHAIN

**Guide Price £195,000 Leasehold**

Local Authority **Southend on Sea Borough Council**  
Council Tax Band **B**  
EPC Rating



**Sales Office**  
190 London Road, Southend-On-Sea,  
Essex, SS1 1PJ

**Contact**  
01702 34 11 77  
<https://hairandson.co.uk/>

Agents Note: Whilst every care has been taken to prepare these particulars, they are for guidance purposes only. All measurements are approximate and for general guidance purposes only and whilst every care has been taken to ensure accuracy, they should not be relied upon and potential buyers/tenants are advised to recheck the measurements.

