

**HS HAIR & SON**



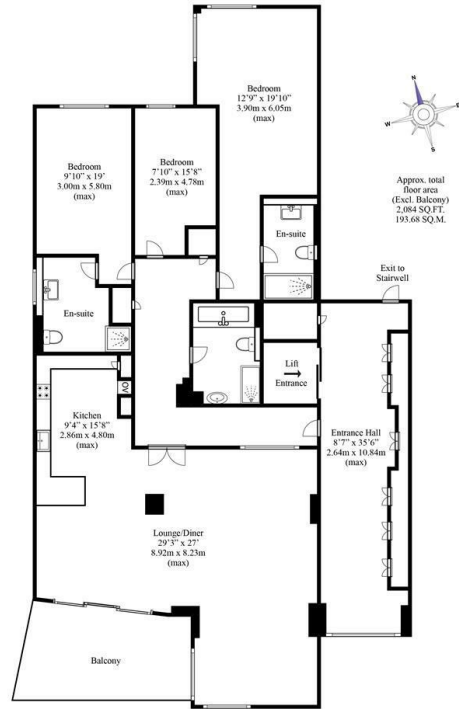
## The Leas , Westcliff-on-Sea SS0 8FF

- FABULOUS THREE DOUBLE BEDROOMS
- STUNNING VIEWS ACROSS THE ESTUARY
  - DESIRABLE WEST WING POSITION
    - PRIVATE LIFT ACCESS
- SECURED UNDERGROUND PARKING
- THREE BATHROOMS INCLUDING TWO EN-SUITES
  - SHARE OF FREEHOLD
- ON SITE CONCIERGE & GYM
  - SOUTH FACING BALCONY
- EXCELLENT LOCATION & IN WALKING DISTANCE OF WESTCLIFF STATION

Offers Over £1,000,000 Share of Freehold



Local Authority **Southend on Sea Borough Council**  
Council Tax Band **G**  
EPC Rating **B**



**Disclaimer**  
This floorplan is for illustrative purposes only. We do not accept responsibility for any errors or omissions. The depicted appliances have not been tested, and their operability or efficiency is not guaranteed. Measurements are approximate and not to scale and not precise, and may have been taken from the widest area including wardrobes and storage spaces. Garages and outbuildings may not be represented in their actual location in relation to the property. Buyers are advised to take their own measurements and compass reading. Internal measurements and total areas should be verified, as their accuracy is not guaranteed.

**Sales Office**  
190 London Road, Southend-On-Sea,  
Essex, SS1 1PJ

**Contact**  
01702 34 11 77  
<https://hairandson.co.uk/>

Agents Note: Whilst every care has been taken to prepare these particulars, they are for guidance purposes only. All measurements are approximate and for general guidance purposes only and whilst every care has been taken to ensure accuracy, they should not be relied upon and potential buyers/tenants are advised to recheck the measurements.

