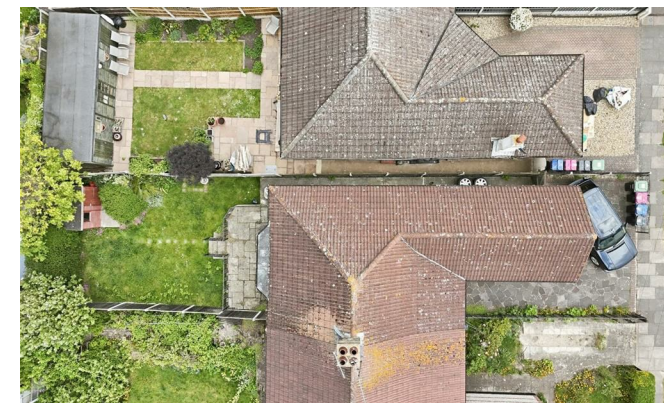


**HS HAIR & SON**



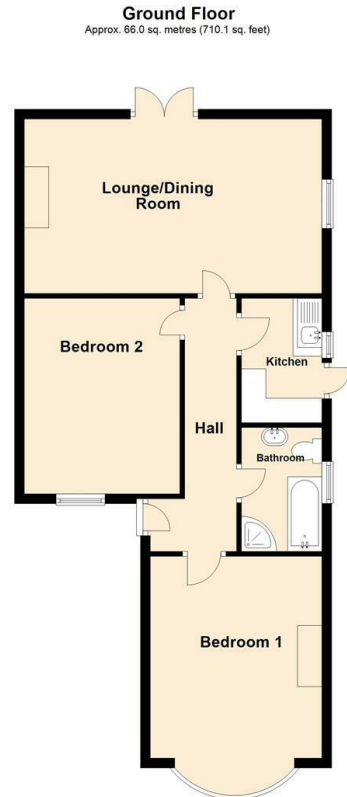
## Rayleigh Drive , Leigh-on-Sea SS9 4JF

- SEMI-DETACHED BUNGALOW
- IN NEED OF SOME MODERNISATION
  - OFF ROAD PARKING
- SHORT DRIVE IN TO LEIGH BROADWAY AND EASY ACCESS TO THE A127
- TWO DOUBLE BEDROOMS
- LOVELY REAR GARDEN
- GAS CENTRAL HEATING
- NO ONWARD CHAIN

**Guide Price £350,000 Freehold**



Local Authority **Southend on Sea Borough Council**  
Council Tax Band **C**  
EPC Rating **D**



Total area: approx. 66.0 sq. metres (710.1 sq. feet)

**Sales Office**  
190 London Road, Southend-On-Sea,  
Essex, SS1 1PJ

**Contact**  
01702 34 11 77  
<https://hairandson.co.uk/>

Agents Note: Whilst every care has been taken to prepare these particulars, they are for guidance purposes only. All measurements are approximate and for general guidance purposes only and whilst every care has been taken to ensure accuracy, they should not be relied upon and potential buyers/tenants are advised to recheck the measurements.

