



Armitage Road

Southend-on-Sea

- FOUR BEDROOMS
- EN SUITE SHOWER TO MAIN BEDROOM
- GROUND FLOOR CLOAKROOM
- STUNNING LARGE SECLUDED LANDSCAPED GARDEN



Guide Price £625,000 to £650,000

Impressive four bedroom detached home with a glorious secluded garden. Plans drawn up to extend to the side and rear including an annexe. Bournes Green School catchment and with reach of The Broadway shops and Station. Very nicely presented, lounge and separate dining room.





AGENTS NOTES

Nicely presented four bedroom detached home within the Bournes Green catchment area. Very impressive plot with a beautiful large secluded landscaped garden.

Detailed plans have been drawn up for extending to both the side and rear including separate annexe and variations just to extend the home if required.

There is a large detached garage and plenty of off road parking.

The main home shows very well with a generous size lounge with patio doors opening to the stunning garden as well as double doors opening to the separate dining room. Ground floor cloakroom and a large fitted kitchen breakfast room with access to the garden.

Four bedrooms to the first floor with a shower room to the main one, fitted bathroom, double glazing and gas central heating.



All within easy reach of the bustling Broadway shops and cafe's as well as the Main line railway Station.
Easy transport road links to all surrounding areas.

HALLWAY

8' 0" x 9' 7" (2.44m x 2.92m)

CLOAKROOM

LOUNGE

17' 9" x 11' 7" (5.41m x 3.53m)

DINING ROOM

11' 7" x 9' 10" (3.53m x 3m)

KITCHEN

17' 6" x 8' 0" (5.33m x 2.44m)

LANDING

BATHROOM

EN SUITE MAIN BEDROOM

14' 4" x 10' 0" (4.37m x 3.05m)



BEDROOM

11' 2" x 10' 2" (3.4m x 3.1m)

BEDROOM

9' 0" x 9' 6" (2.74m x 2.9m)

BEDROOM

7' 8" x 7' 3" (2.34m x 2.21m)



DETACHED GARAGE

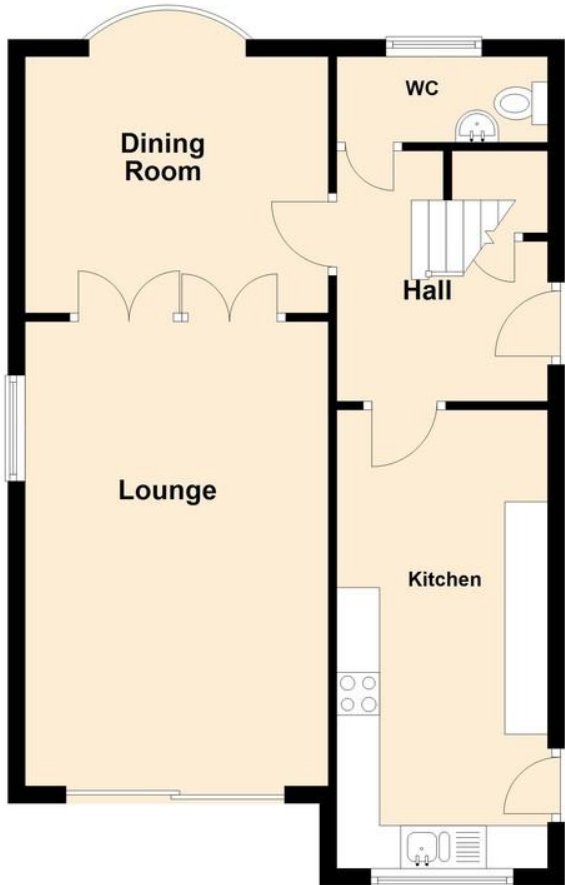
GARDEN



These particulars are accurate to the best of our knowledge but do not constitute an offer or contract. Photos are for representation only and do not imply the inclusion of fixtures and fittings. The floor plans are not to scale and only provide an indication of the layout.

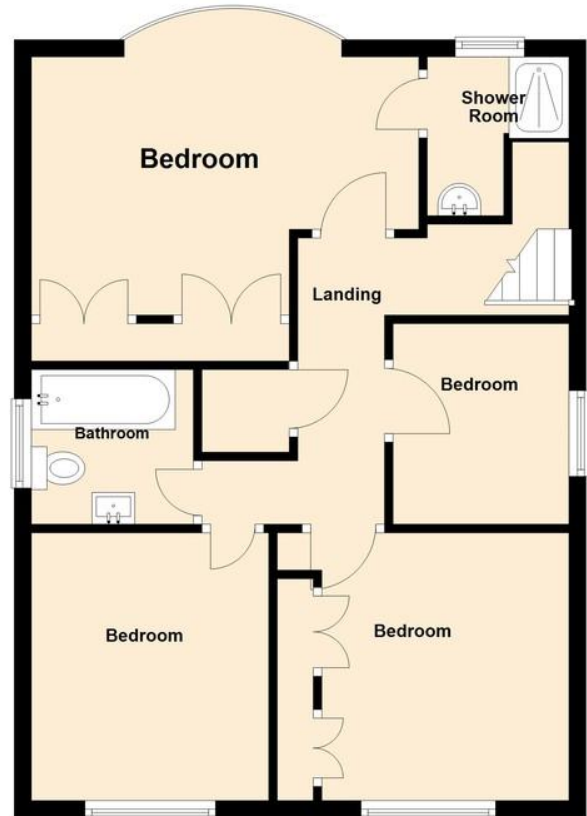
Ground Floor

Approx. 54.6 sq. metres (587.4 sq. feet)



First Floor

Approx. 54.8 sq. metres (590.0 sq. feet)



Total area: approx. 109.4 sq. metres (1177.4 sq. feet)

Regulated by RICS

t. 01702 34 11 77
More than an estate agent
www.hairandson.co.uk

Residential Sales
190 London Road
Southend-On-Sea
Essex SS1 1PJ

