



Burdett Avenue

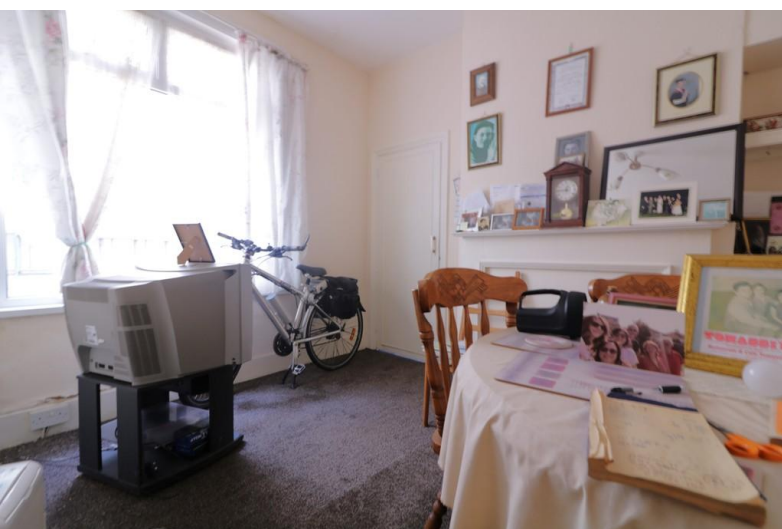
Westcliff-on-Sea

- TWO BEDROOM GROUND FLOOR FLAT
- ONE RECEPTION ROOM
- GARDEN SPACE
- GREAT INVESTMENT OPPORTUNITY



Guide Price £165,000

Hair & Son present this two bedroom ground floor flat, with one reception room, kitchen and a garden. The property requires modernisation throughout but offers a fantastic investment opportunity and a chance to implement your own stamp on the property.





Hair & Son present this two bedroom ground floor flat, with one reception room, kitchen and a garden. The property requires modernisation throughout but offers a fantastic investment opportunity and a chance to implement your own stamp on the property.

With vacant possession and no onward chain.

Burdett Avenue is extremely well located, close by to London Road and Hamlet Court Road with local amenities including shops and eateries. Westdiff Train is also within walking distance which provides direct transport links to London Fenchurch Street.

HALLWAY

BEDROOM ONE

14' 8" x 12' 3" (4.47m x 3.73m)

BEDROOM TWO

11' 6" x 10' 3" (3.51m x 3.12m)

LIVING ROOM

11' 9" x 11' 6" (3.58m x 3.51m)

BATHROOM

5' 9" x 5' 3" (1.75m x 1.6m)

KITCHEN

11' 6" x 9' 8" (3.51m x 2.95m)

TENURE

LEASE REMAINING - 83 YEARS

GROUND RENT - £250 PER ANNUM

EPC – D

COUNCIL TAX BAND - A

These particulars are accurate to the best of our knowledge but do not constitute an offer or contract. Photos are for representation only and do not imply the inclusion of fixtures and fittings. The floor plans are not to scale and only provide an indication of the layout.

Ground Floor

Approx. 60.1 sq. metres (647.1 sq. feet)



Total area: approx. 60.1 sq. metres (647.1 sq. feet)

Regulated by RICS

t. 01702 34 11 77

More than an estate agent

www.hairandson.co.uk

Residential Sales
190 London Road
Southend-On-Sea
Essex SS1 1PJ

