



Thorpedene Gardens

Southend On Sea

- FOUR BEDROOMS
- 100' SECLUDED GARDEN
- 30' EXTENDED LIVING ROOM
- SEPARATE DINING ROOM



Guide Price £650,000

YOUR FOREVER HOME HAS JUST ARRIVED...What a spectacular four bedroom property with En Suite Master bedroom. Stunning 100' landscaped private garden. Extended 30' living room, separate lounge and dining room as well as a wonderful fitted kitchen. Ready made separate office and cloakroom. Quick sale anticipated.





AGENTS NOTES

This fantastic family home is situated in a very desirable location surrounded by properties of similar character and it offers so much !! Perfect position for getting to the sea front, railway stations and local amenities.

It is beautifully presented and has an exceptional private garden. Early vacant possession possible.

PORCH

Glazed porch with doorway leading to the main hall.

HALL

Inviting hallway with quality flooring. Storage cupboard under the stairs.

LIVING ROOM

29' 7" x 17' 9" (9.02m x 5.41m) Extended to provide a fantastic open plan living area with large sliding patio doors opening out to the beautiful secluded garden.

Quality flooring and so much space with bi fold doors opening to the dining room.

LOUNGE

14' 2" x 13' 9" (4.32m x 4.19m) Feature fire place and double glazed bay window to the front.

KITCHEN

18' 2" x 8' 8" (5.54m x 2.64m) Extensively fitted modern kitchen very well designed and laid out to optimize the whole area. Plenty of work surfaces and matching base and wall cupboards.



DINING ROOM

13' 0" x 11' 4" (3.96m x 3.45m) Fitted with a log burner and a very usable area flowing onto the modern kitchen and featuring bi fold doors opening onto the massive living room.

CLOAKROOM

Modern cloakroom with W.C. and wash basin.

LANDING

Doors leading off to the three first floor bedrooms and family bathroom with further stairs leading up to the En Suite master bedroom.

BEDROOM

14' 6" x 12' 2" (4.42m x 3.71m) One of three bedrooms on this floor. Bay window to the front, fitted wardrobe cupboards.



BEDROOM

13' 0" x 12' 2" (3.96m x 3.71m) Fitted wardrobes and double glazed doors opening out to the roof area over the ground floor extension. The room affords great views over the garden area.

BEDROOM

8' 9" x 8' 0" (2.67m x 2.44m) Situated at the front with a double glazed window.

BATHROOM

Modern family bathroom with both bath and separate shower W.C. and wash basin.

Tiled flooring and half tiled walls. Windows to the rear.

MASTER BEDROOM / EN SUITE

14' 6" x 13' 10" (4.42m x 4.22m) Leading from the landing to the second floor can be found the En Suite Master bedroom full of character and offering a recessed dressing / open plan clothes space area.

Double glazed window to the rear and roof light window with a door leading directly to the en suite which has a fitted shower W.C. and wash basin. window to the rear.



OFFICE

10' 2" x 7' 6" (3.1m x 2.29m) The attached garage has been primarily converted to a usable office space currently in use with a rear door opening to a small courtyard area which in turn gives direct access to the living room.

GARDEN

100' 0" (30.48m) Breathtaking totally secluded garden. Established and private measuring approximately 100' in depth with a patio area located to the bottom end.

The main garden patio area is a great size and can be reached from the living room.

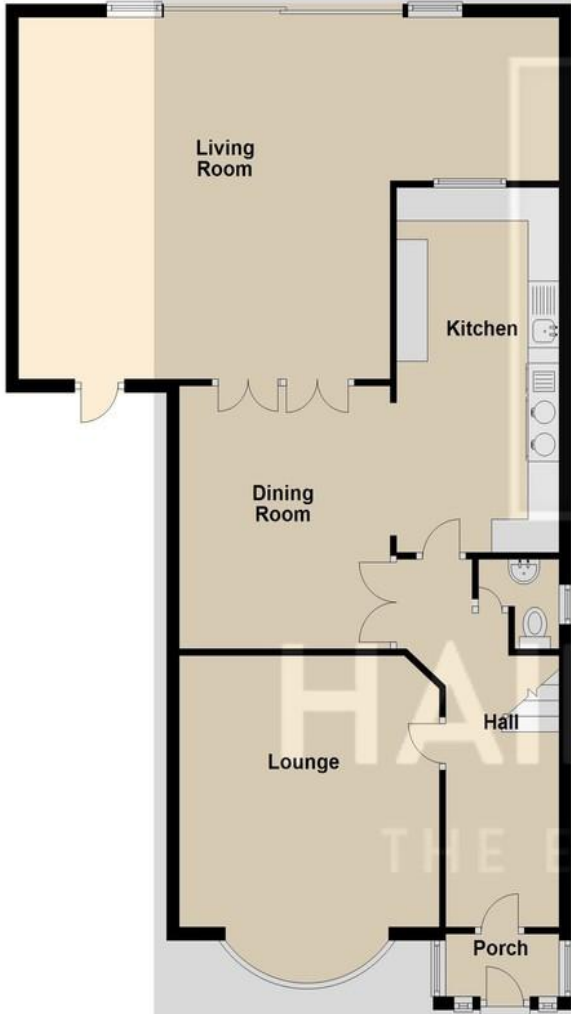
This really is a garden to be seen !!



These particulars are accurate to the best of our knowledge but do not constitute an offer or contract. Photos are for representation only and do not imply the inclusion of fixtures and fittings. The floor plans are not to scale and only provide an indication of the layout.

Ground Floor

Approx. 100.3 sq. metres (1080.1 sq. feet)



First Floor

Approx. 48.2 sq. metres (518.7 sq. feet)



Second Floor

Approx. 26.1 sq. metres (280.7 sq. feet)



Total area: approx. 174.6 sq. metres (1879.6 sq. feet)

Regulated by RICS

t. 01702 34 11 77

More than an estate agent

www.hairandson.co.uk

Residential Sales

190 London Road
Southend-On-Sea
Essex SS1 1PJ

