



Westborough Road

Westcliff-on-Sea

- UNIQUE ONE BEDROOM TOP FLOOR FLAT
- SHARE OF FREEHOLD
- COMMUNAL GARDEN
- STYLISH BATHROOM



Guide Price £180,000

****SHARE OF FREEHOLD**** Hair & Son bring to market this fantastically quirky one bedroom top floor flat boasting a real sense of uniqueness and character, located right in the heart of Westcliff-on-sea.





Hair & Son bring to market this fantastically quirky one bedroom top floor flat which is presented to a high standard throughout, and has been tastefully decorated throughout by the current vendor.

The property is accessed via a spacious hallway which offers a good place for coats and shoes and features the stairs leading to the second floor. The internal hallway of the flat will provide access to the stylish open planned kitchen and living room. The kitchen has a range of cupboard and worktop space and gives room for white goods and also featuring a porthole window. The living room has a fantastic homely feel with an abundance of natural light, you also have ample space for a dining table or a home office.

To the rear of the property is the large double bedroom, with ample eaves storage, alongside a lovely bathroom with a shower, wash hand basin and a low level w/c.

There is a communal garden which features a decking area and a summerhouse.



The property is conveniently located close to the shops on London Road and Hamlet Court Road with the benefit of Westdiff train station which has direct train links in to central London.

HALLWAY

BATHROOM

8' 6" x 3' 8" (2.59m x 1.12m)

BEDROOM

16' 0" x 14' 6" (4.88m x 4.42m)



KITCHEN/LIVING ROOM

19' 6" x 13' 5" (5.94m x 4.09m)

COMMUNAL GARDEN

TENURE

1/3 Share of the freehold.

116 years remaining on the lease.

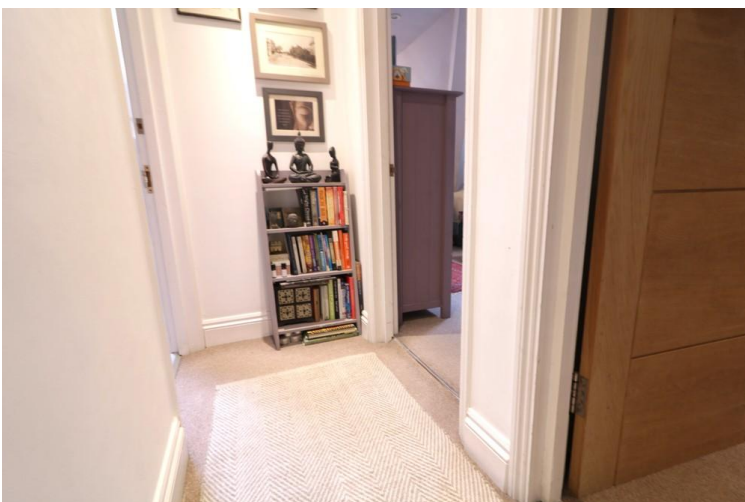
Service charge - £939 per annum including buildings insurance.

Council Tax Band A.

EPC to be confirmed.



These particulars are accurate to the best of our knowledge but do not constitute an offer or contract. Photos are for representation only and do not imply the inclusion of fixtures and fittings. The floor plans are not to scale and only provide an indication of the layout.

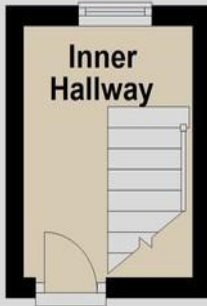


Second Floor

Approx. 49.8 sq. metres (535.8 sq. feet)

First Floor

Approx. 4.8 sq. metres (51.5 sq. feet)



Total area: approx. 54.6 sq. metres (587.3 sq. feet)

Regulated by RICS

t. 01702 34 11 77

More than an estate agent

www.hairandson.co.uk

Residential Sales

190 London Road
Southend-On-Sea
Essex SS1 1PJ

