

# LET AND MANAGED



**HAIR & SON**  
THE ESTATE OFFICE

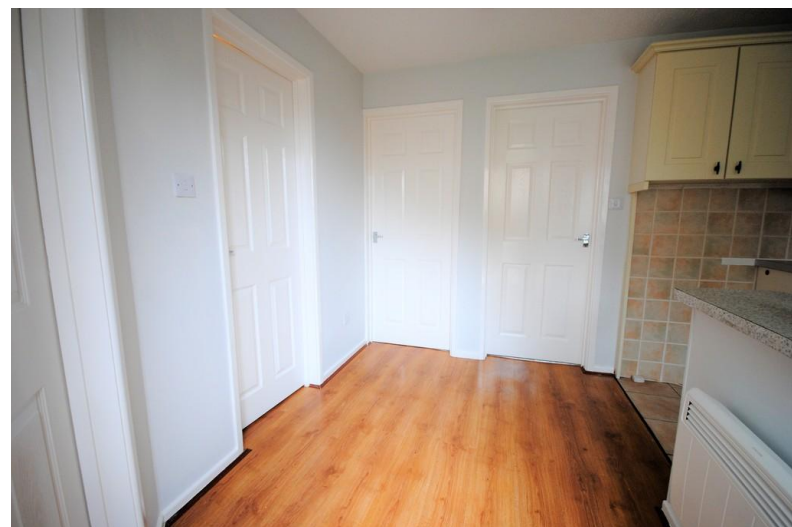
## Moat Rise

Rayleigh SS6 7RP

- Ground floor flat
- Newly Decorated
- New Carpets
- 2 Bedrooms

## £795 pcm

A lovely 2 bedroom ground floor flat, newly decorated with new carpets. New electric heaters. In a nice quiet area. Allocated parking and a visitors parking space.





A lovely 2 bedroom ground floor flat, newly decorated with new carpets. New electric heaters. In a nice quiet area. Allocated parking and a visitors parking space.

#### **KITCHEN**

10' 8" x 6' 5" (3.26m x 1.96m) Newly decorated kitchen with new oven and hob, plenty of wall and floor cupboards.

#### **LOUNGE**

12' 2" x 11' 3" (3.72m x 3.43m) A good size lounge newly decorated with new carpets, windows to front of the property, new electric heater.

#### **BEDROOM 2**

10' 9" x 6' 5" (3.28m x 1.97m) Newly decorated with new carpet, electric heater window to rear of the property.





## BATHROOM

7' 4" x 5' 7" (2.24m x 1.71m) White bathroom suite consisting of bath, with overhead shower, wash-hand basin, low flush wc.

These particulars are accurate to the best of our knowledge but do not constitute an offer or contract. Photos are for representation only and do not imply the inclusion of fixtures and fittings. The floor plans are not to scale and only provide an indication of the layout.



Regulated by RICS

Energy Efficiency Rating			
Score	Energy rating	Current	Potential
92+	A		
81-91	B		
69-80	C		78   C
55-68	D	65   D	

t. 01702 34 11 77

More than an estate agent

[www.hairandson.co.uk](http://www.hairandson.co.uk)

Residential Lettings

190 London Road  
Southend-On-Sea  
Essex  
SS1 1PJ

