



Glenwood Avenue

Leigh-on-Sea

- SIX /SEVEN BEDROOMS
- 19'4 x 17'5 LIVING ROOM
- 22'10 QUALITY FITTED KITCHEN/DINER
- 28'6 x 23'9 ENSUITE MAIN BEDROOM



Guide Price £700,000

An exceptional extended six/seven bedroom home finished to a very high standard with such versatile accommodation, just breath taking from the moment you enter. What an absolute gem and the size of the rooms and finish need to be seen to be believed. Fantastic location for schools and access to country parks.





AGENTS NOTES

The moment you enter this home you just immediately see the quality of finish which extends to every room and believe me there is so much to take in especially the size including seven double bedrooms with the master bedroom measuring 28'6 x 23'9 featuring an enormous dressing area and En suite.

Magnificent solid oak bespoke fitted kitchen with granite work tops and Amtico flooring. The kitchen has an open plan design with a dining area looking out to the fantastic garden.

The main living room also has direct access to the garden and is a wonderful size 19'4 x 17'5 finished with solid oak flooring which extends to the hallway and many other rooms.

There are several bathrooms and showers all well equipped and finished to a good standard.

Plenty of off road parking, garage and a garden that is well suited to a property of this size. There is a large patio area and fantastic large lawned main garden leading to the brick and tiled workshop / studio with power light and heating measuring 24' x 7'8 with an additional room to the rear running the entire length as well.

Further benefits include:

Integrated Bosch appliances.

Designer flat panelled radiators throughout.

Garden lighting system, flower bed watering system and taps.

5 External CCTV cameras, plus PTZ camera to front.

Burglar alarm to all rooms and doors.

Powered canopy sun blinds to rear patio doors.

Fibre optic internet connections.

Thermally insulated power operated garage door.

HALL

26' 6" x 7' 8" (8.08m x 2.34m)

LIVING ROOM

19' 4" x 17' 5" (5.89m x 5.31m)

KITCHEN/DINER

22' 10" x 9' 10" (6.96m x 3m)

GROUND FLOOR SHOWER ROOM

GROUND FLOOR BEDROOM

12' 0" x 10' 6" (3.66m x 3.2m)

GROUND FLOOR BEDROOM

9' 6" x 11' 7" (2.9m x 3.53m)

GROUND FLOOR BEDROOM

12' 6" x 7' 4" (3.81m x 2.24m)

LANDING

SHOWER ROOM

9' 2" x 6' 7" (2.79m x 2.01m)

MASTER BEDROOM / EN SUITE

28' 6" x 23' 9" (8.69m x 7.24m)

EN SUITE

11' 6" x 6' 6" (3.51m x 1.98m)

BEDROOM

17' 7" x 11' 4" (5.36m x 3.45m)

BEDROOM

15' 10" x 9' 5" (4.83m x 2.87m)

WORKSHOP / OFFICE SPACE

24' 0" x 21' 0" (7.32m x 6.4m)

GARAGE

17' 2" x 10' 6" (5.23m x 3.2m)

GARDEN

These particulars are accurate to the best of our knowledge but do not constitute an offer or contract. Photos are for representation only and do not imply the inclusion of fixtures and fittings. The floor plans are not to scale and only provide an indication of the layout.

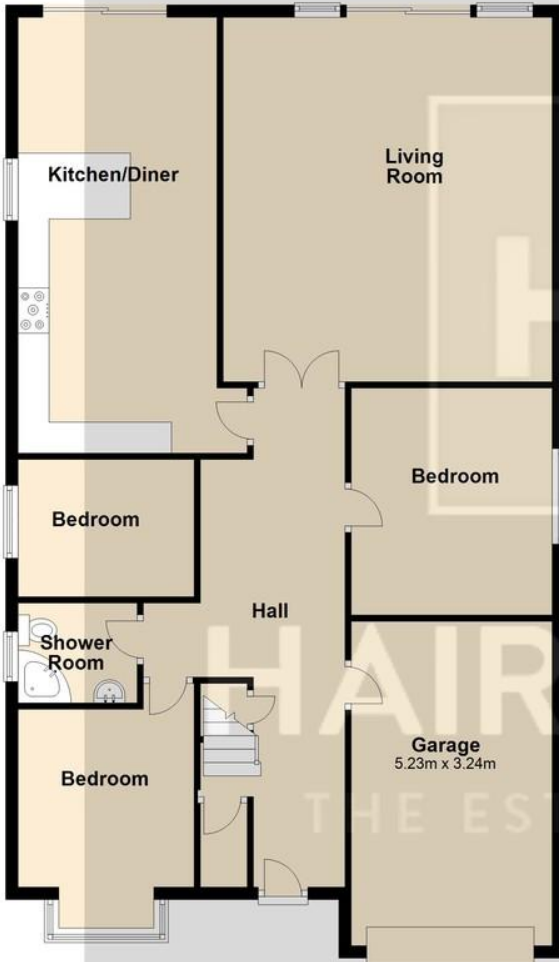




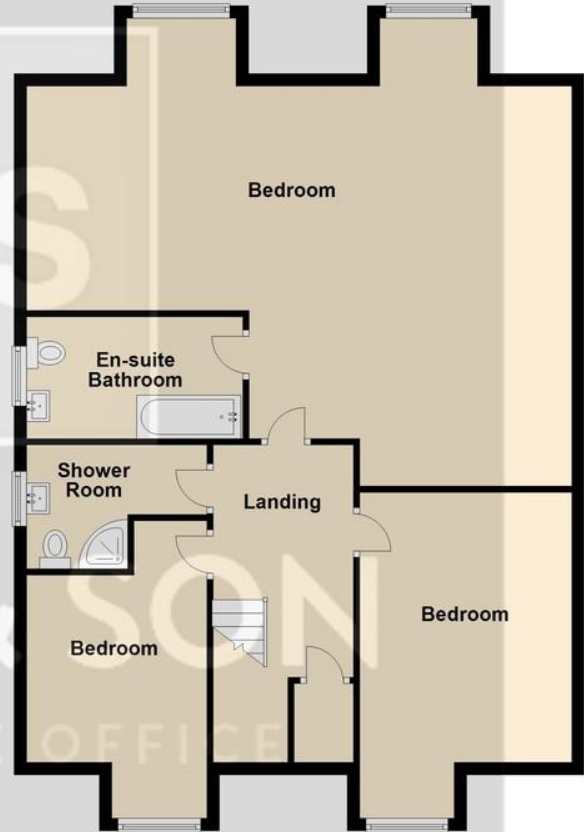




Ground Floor
Approx. 124.4 sq. metres



First Floor
Approx. 102.3 sq. metres



Total area: approx. 226.7 sq. metres

Regulated by RICS

t. 01268 774316
More than an estate agent
www.hairandson.co.uk

Residential Sales
6 High Street
Rayleigh
Essex SS6 7EF

