



North Road

Westcliff-on-Sea

- VACANT POSSESSION & NEW LEASE
- ONE DOUBLE BEDROOM
- GAS CENTRAL HEATING
- SHORT DRIVE TO SOUTHEND TOWN CENTRE



£150,000

**** VACANT POSSESSION AND NEW LEASE**** HAIR & SON offer for sale this spacious one bedroom ground floor flat in the heart of Westcliff close to transport links and all local amenities.





AGENTS NOTES.

Hair & Son are pleased to offer this very spacious one bedroom ground floor that is a great opportunity to get on the property ladder or for investment purposes. The accommodation comprises of entrance hall, spacious lounge with bay window, fitted kitchen with appliances white include oven, hob and extractor fan as well as plenty of cupboard space, a double bedroom and fitted bathroom suite. A further benefit is gas central heating and double glazing.

This property is located with close proximity to all local amenities including shops and transport links.

ENTRANCE HALL

4' 61" x 3' 58" (2.77m x 2.39m)

INNER HALLWAY

8' 35" x 11' 33" (3.33m x 4.19m)

BATHROOM

7' 09" x 6' 13" (2.36m x 2.16m)

KITCHEN

10' 89" x 8' 05" (5.31m x 2.57m)

LIVING ROOM

11' 00" x 12' 59" (3.35m x 5.16m)

BEDROOM

10' 51" x 12' 03" (4.34m x 3.73m)

LEASE

We understand there will be a new long lease upon completion.

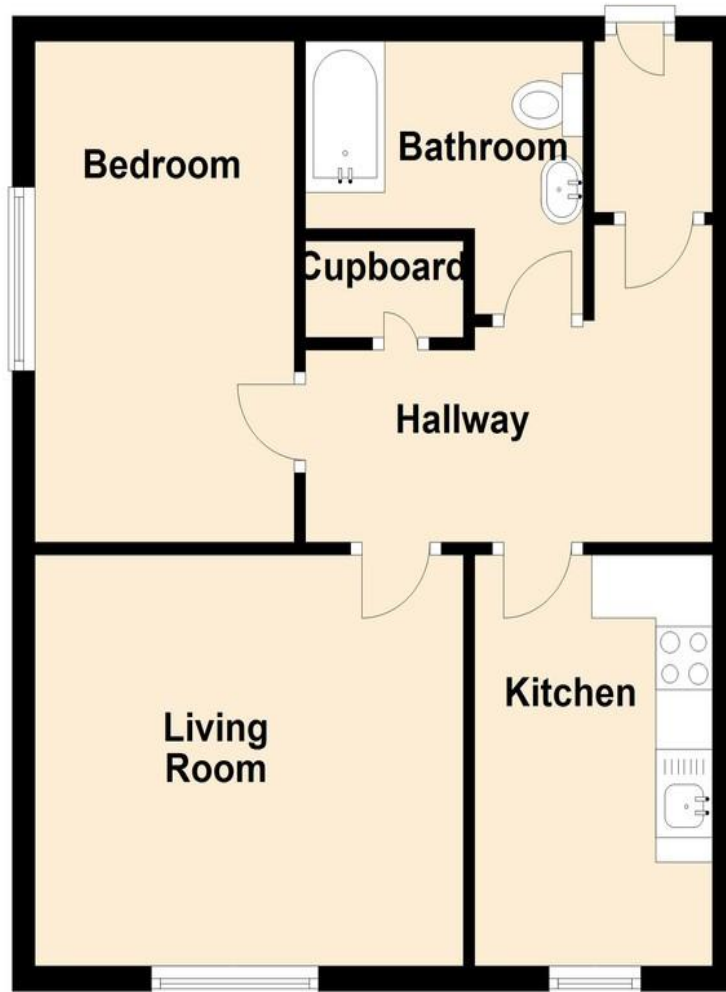
Council tax band - A

EPC rating - C

These particulars are accurate to the best of our knowledge but do not constitute an offer or contract. Photos are for representation only and do not imply the inclusion of fixtures and fittings. The floor plans are not to scale and only provide an indication of the layout.

Ground Floor

Approx. 43.9 sq. metres (472.2 sq. feet)



Total area: approx. 43.9 sq. metres (472.2 sq. feet)

Regulated by RICS

t. 01702 34 11 77

More than an estate agent

www.hairandson.co.uk

Residential Sales
190 London Road
Southend-On-Sea
Essex SS1 1PJ

