



Eastwood Road

Rayleigh

- LARGE OUTSIDE ROOF TERRACE
- VACANT POSSESSION
- TWO DOUBLE BEDROOMS
- ALLOCATED PARKING



Guide Price £199,950

VACANT two bedroom second floor apartment with a 155 year lease. Amazing inside and out with its own large roof terrace and allocated parking. Just a stones throw of Rayleigh High Street and access to the Station. Juliet balcony to the lounge South facing and patio doors from one of the bedrooms leading to the roof terrace.





HALL

External stairs leading up to the second floor with the double glazed front door set back.

Radiator, laminate flooring access to the boarded loft with ladder. Within the loft is a newly fitted boiler.

LOUNGE

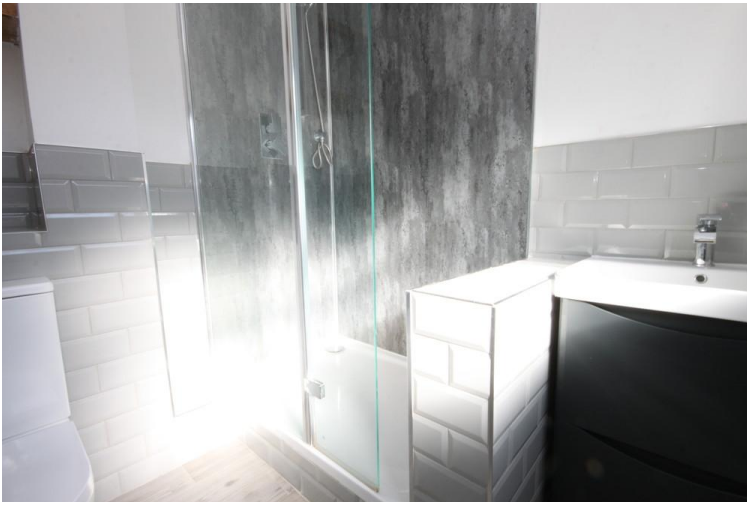
16' 0" x 10' 8" (4.88m x 3.25m) Upvc double glazed doors to the front which is south facing and has a Juliet balcony. Radiator and laminate flooring.

KITCHEN

12' 9" x 7' 5" (3.89m x 2.26m) Nicely fitted modern kitchen with plenty of work top area. Inset stainless steel sink. Cooker appliance with extractor hood to remain. Plumbed for a washing machine, laminate flooring and double glazed window South facing to the front.

BEDROOM

15' 3" x 11' 0" (4.65m x 3.35m) Double glazed window and radiator.



BEDROOM

14' 2" x 13' 6" (4.32m x 4.11m) Great size second bedroom with UPVc double doors opening out to the roof terrace. Radiator and recessed dressing area.

BATHROOM

Lovely modern fitted suite comprising of a double shower, wash basin, vanity unit and w.c, towel rail and tiling.

GARDEN/TERRACE

Spectacular wrap round roof terrace providing plenty of room for barbeques and tables with chairs. Offering views across parts of Rayleigh, laid with artificial turf.

PARKING

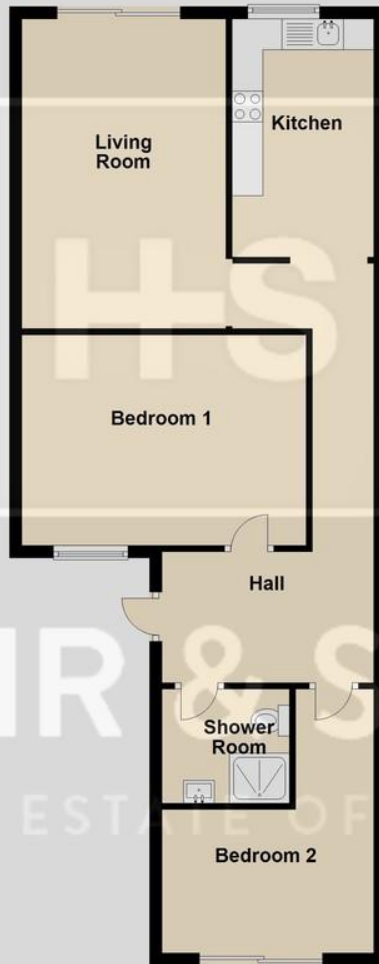
The apartment has its own allocated parking bay.

These particulars are accurate to the best of our knowledge but do not constitute an offer or contract. Photos are for representation only and do not imply the inclusion of fixtures and fittings. The floor plans are not to scale and only provide an indication of the layout.



Second Floor

Approx. 71.6 sq. metres (771.2 sq. feet)



Total area: approx. 71.6 sq. metres (771.2 sq. feet)

Regulated by RICS

t. 01268 774316

More than an estate agent

www.hairandson.co.uk

Residential Sales

6 High Street
Rayleigh
Essex SS6 7EF

