



Kensington Road

Southend-on-Sea

- NO ONWARD CHAIN
- THREE BEDROOMS
- VERY NICE GARDEN
- KEENLY PRICED TO SELL

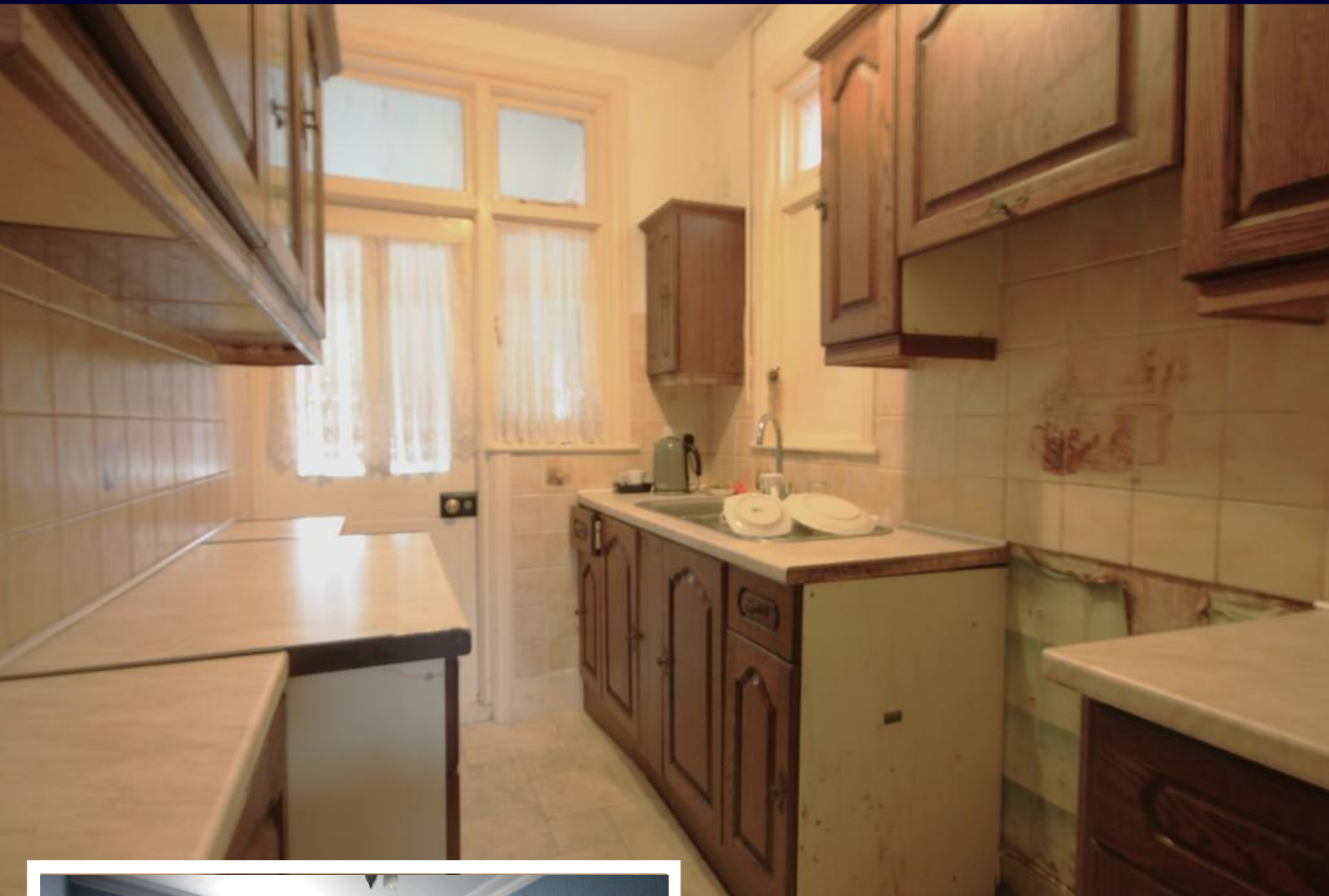


Guide Price £325,000

Vacant three bedroom house requiring updating in an eagerly sought after area close to the main line railway station. Two reception rooms and lovely garden. Within easy reach of the seafront and the park.

What an opportunity and keenly priced to sell! Keys held ring now its not to be missed.





AGENTS NOTES

VACANT three bedroom semi detached house in need of some updating but very keenly priced to sell! Situated in a very desirable location within very easy reach of Southchurch Park and the seafront.

The property enjoys a delightful and well tended garden and there is potential for off road parking.

Internally it offers two reception rooms, kitchen and separate W.C.

The first floor features three bedrooms, bathroom and W.C.

Gas central heating with a combination boiler throughout.

HALLWAY

LOUNGE

15' 6" x 11' 0" (4.72m x 3.35m)

DINING ROOM

12' 5" x 10' 6" (3.78m x 3.2m)



KITCHEN

8' 10" x 6' 0" (2.69m x 1.83m)

LOBBY

6' 10" x 4' 9" (2.08m x 1.45m)

WC

LANDING

BEDROOM ONE

15' 6" x 10' 3" (4.72m x 3.12m)



BEDROOM TWO

12' 5" x 9' 5" (3.78m x 2.87m)

BEDROOM THREE

9' 2" x 6' 7" (2.79m x 2.01m)

W.C.

BATHROOM

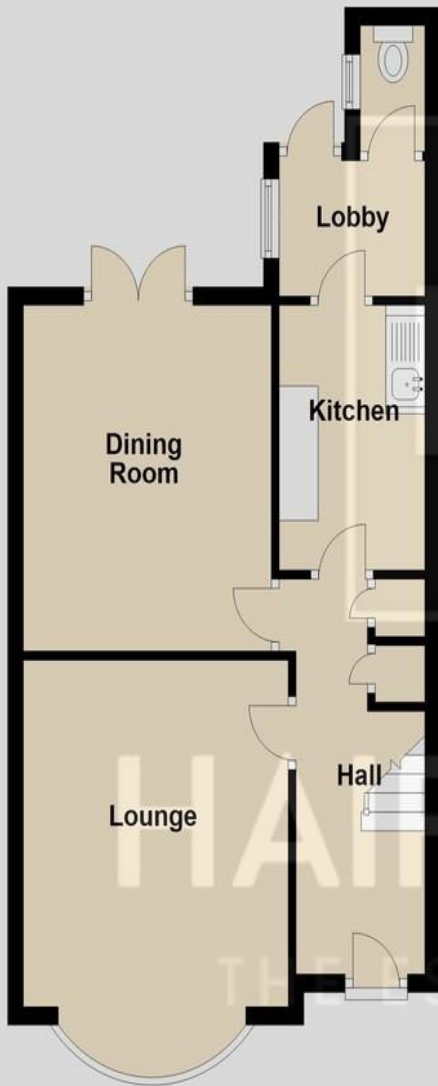
GARDEN



These particulars are accurate to the best of our knowledge but do not constitute an offer or contract. Photos are for representation only and do not imply the inclusion of fixtures and fittings. The floor plans are not to scale and only provide an indication of the layout.

Ground Floor

Approx. 43.5 sq. metres (468.7 sq. feet)



First Floor

Approx. 41.5 sq. metres (446.4 sq. feet)



Total area: approx. 85.0 sq. metres (915.1 sq. feet)

Regulated by RICS

t. 01702 34 11 77

More than an estate agent

www.hairandson.co.uk

Residential Sales
190 London Road
Southend-On-Sea
Essex SS1 1PJ

