



West Road

Westcliff-on-Sea

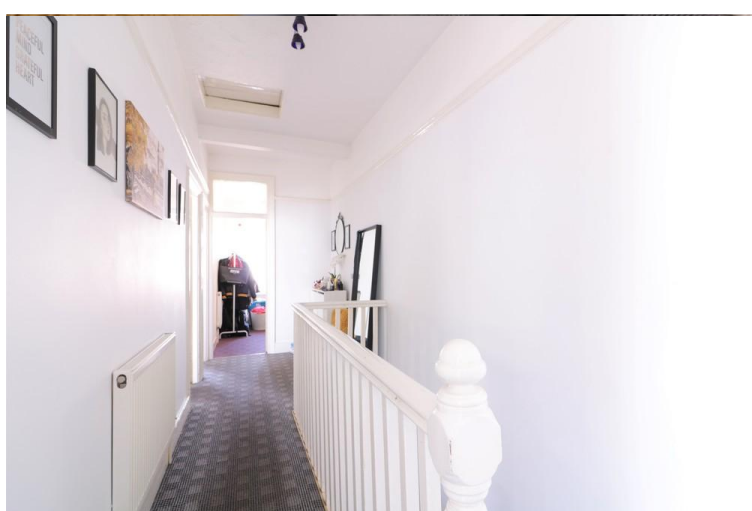
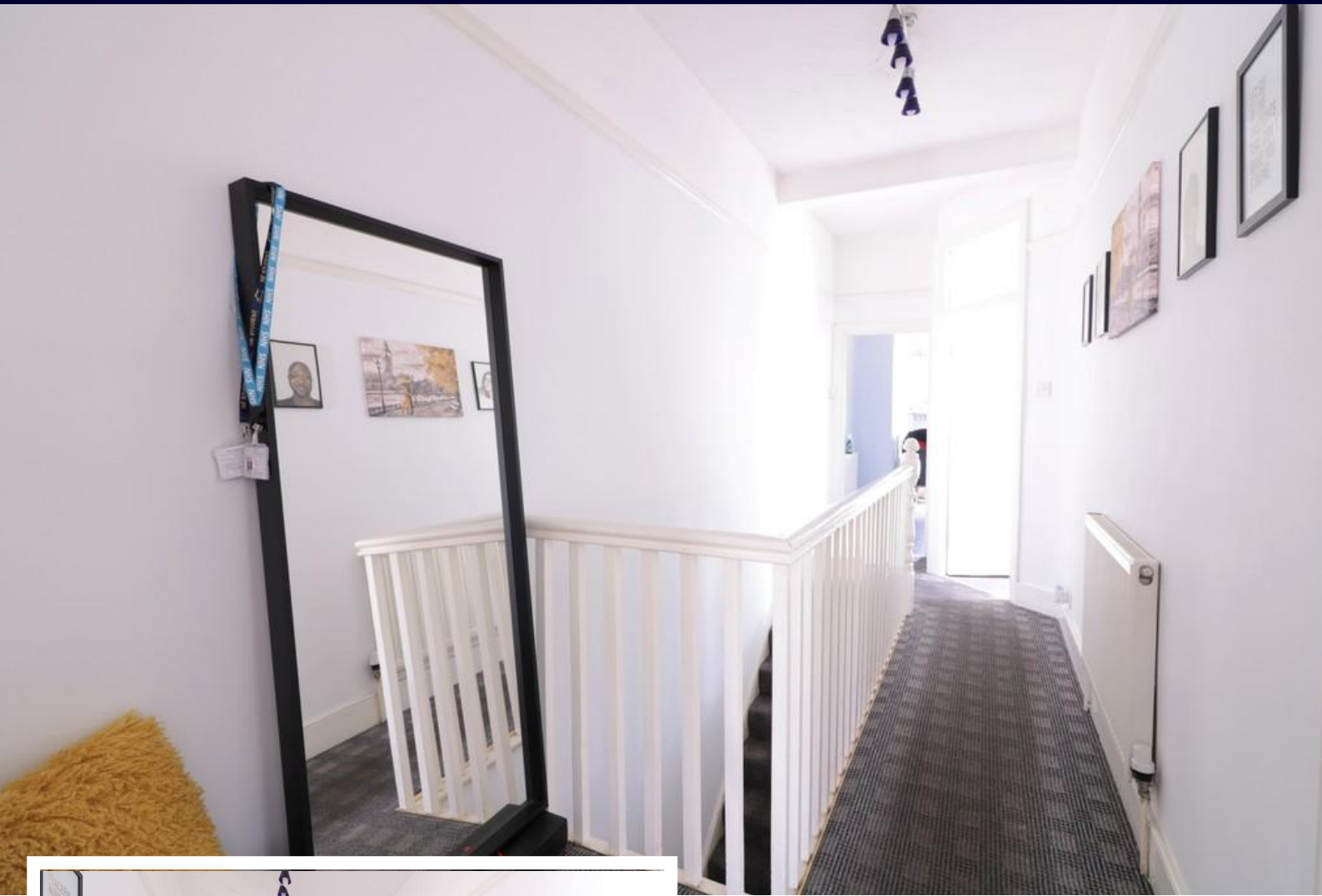
- FIRST FLOOR FLAT
- TWO BEDROOMS
- LOUNGE WITH BAY WINDOW
- THREE PIECE BATHROOM



Guide Price £150,000

CASH BUYERS REQUIRED Hair & Son offer this good size first floor flat which is situated in central Westcliff-on-sea. With two bedrooms, three piece bathroom, lounge with bay window and a kitchen with space for a table and direct access to its own section of garden. Lease with 55 years remaining.





CASH BUYERS REQUIRED

Hair & Son offer this good size first floor flat which is situated in central Westcliff-on-sea.

With two bedrooms (one double, one single) a three piece bathroom, a lounge with a bay window to the front, a good size kitchen with space for a kitchen table and direct access to its own section of rear garden.

The current lease has 55 years remaining therefore we require CASH BUYERS ONLY.

OWN FRONT DOOR

LANDING/HALLWAY

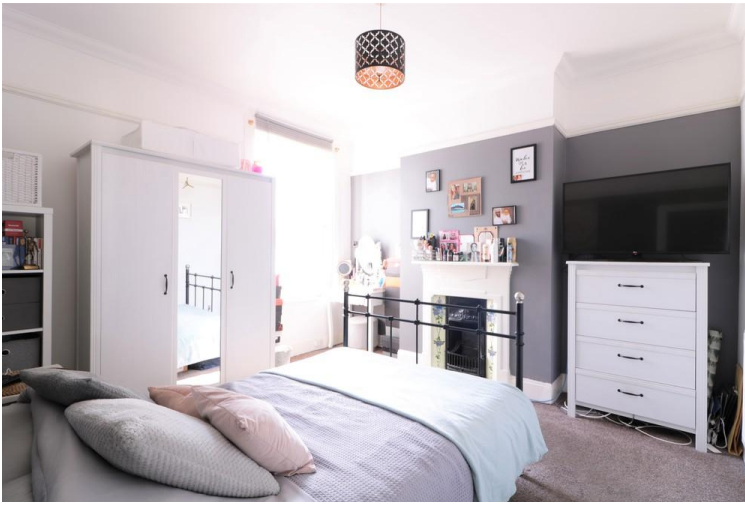
21' 1" x 5' 4" (6.43m x 1.63m)

LOUNGE

15' 6" x 11' 3" (4.72m x 3.43m)

KITCHEN

11' 1" x 10' 4" (3.38m x 3.15m)



BEDROOM ONE

12' 5" x 11' 2" (3.78m x 3.4m)

BEDROOM TWO

9' 5" x 5' 4" (2.87m x 1.63m)

BATHROOM

REAR GARDEN

LEASE

Lease - 55 Years remaining.

Ground Rent - £10 per annum.

Council Tax Band - A.

These particulars are accurate to the best of our knowledge but do not constitute an offer or contract. Photos are for representation only and do not imply the inclusion of fixtures and fittings. The floor plans are not to scale and only provide an indication of the layout.



First Floor

Approx. 57.4 sq. metres (618.0 sq. feet)



Total area: approx. 57.4 sq. metres (618.0 sq. feet)

Regulated by RICS

t. 01702 34 11 77

More than an estate agent

www.hairandson.co.uk

Residential Sales
190 London Road
Southend-On-Sea
Essex SS1 1PJ

