



St. Johns Road

Westcliff-on-Sea

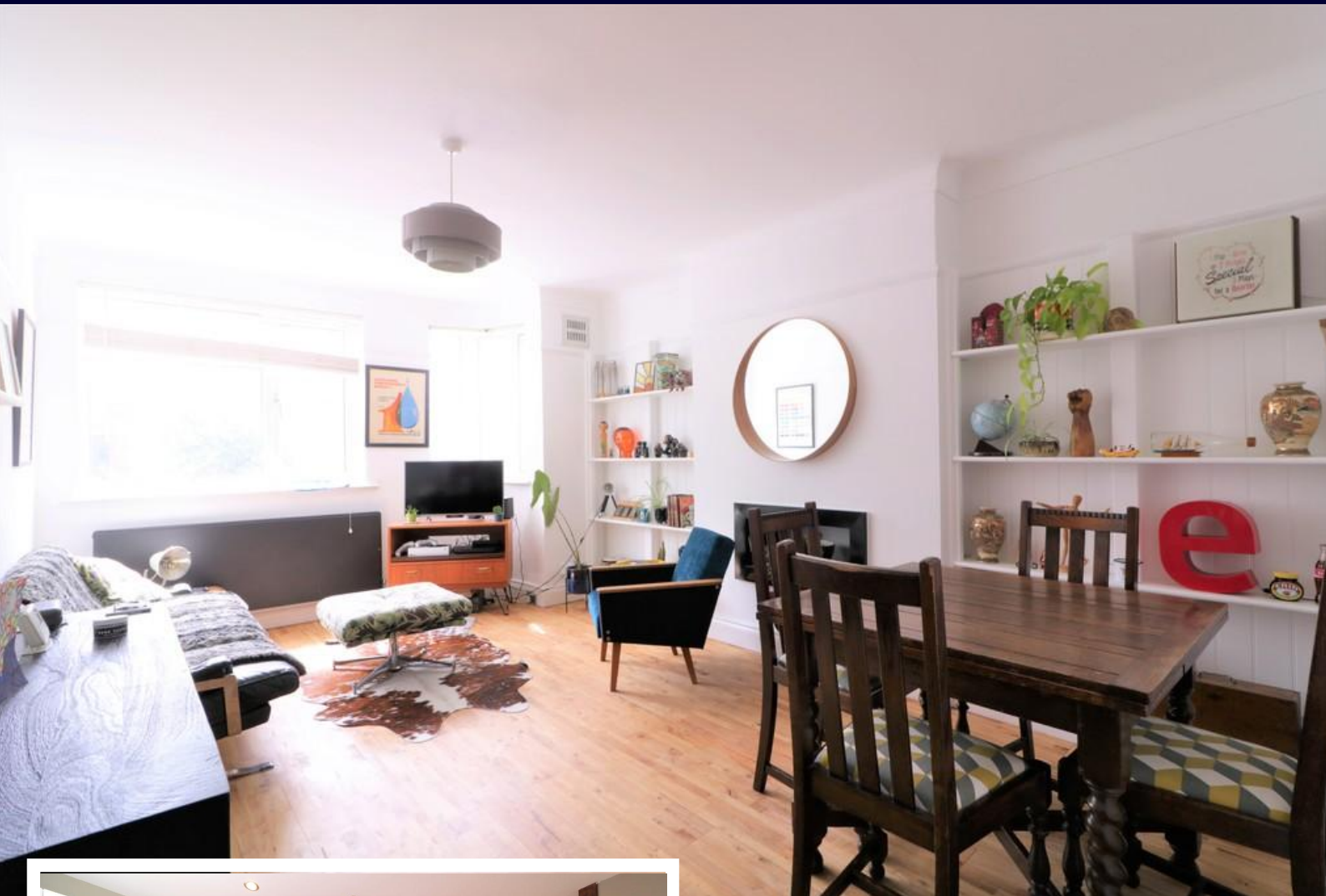
- GROUND FLOOR FLAT
- TWO DOUBLE BEDROOMS
- MODERN KITCHEN WITH UTILITY
- THREE PIECE BATHROOM



Guide Price £255,000

Situated just off of Hamlet Court Road is this 1930's Art Deco style purpose built ground floor flat. Tastefully presented throughout with a modern kitchen and bathroom, two double bedrooms, a good size lounge and a driveway to the side leading to a garage. An ideal first or investment purchase.





Situated in central Westcliff-on-sea is this 1930's Art Deco style purpose built ground floor flat.

Tastefully presented throughout with a modern kitchen and three piece bathroom suite, two double bedrooms, a good size lounge and a driveway to the side leading to a garage.

The front garden is also demised to the flat.

Located close to good local amenities which include shops and restaurants of Hamlet Court Road, Westcliff-on-sea train station to London Fenchurch Street, within walking distance of Southend town centre, good local schools and Westcliff seafront.

An ideal first or investment purchase.

**HALL**

7' 8" x 6' 8" (2.34m x 2.03m)

LOUNGE

16' 9" x 11' 1" (5.11m x 3.38m)

KITCHEN

11' 0" x 8' 2" (3.35m x 2.49m)

BEDROOM ONE

16' 9" x 11' 1" (5.11m x 3.38m)

BEDROOM TWO

11' 1" x 9' 2" (3.38m x 2.79m)

BATHROOM**FRONT GARDEN****OFF STREET PARKING****GARAGE****LEASE**

The following information has been provided by the seller.

Lease - 161 Years remaining.

Council Tax - B.

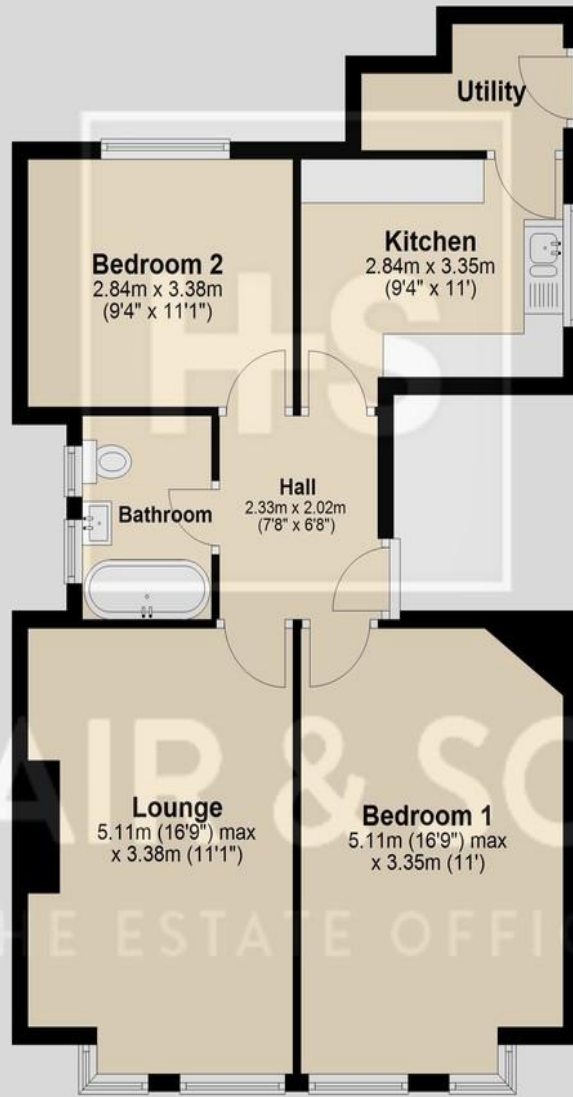
EPC rating - D.

These particulars are accurate to the best of our knowledge but do not constitute an offer or contract. Photos are for representation only and do not imply the inclusion of fixtures and fittings. The floor plans are not to scale and only provide an indication of the layout.



Ground Floor

Approx. 65.5 sq. metres (704.8 sq. feet)



Total area: approx. 65.5 sq. metres (704.8 sq. feet)

Regulated by RICS

t. 01702 34 11 77

More than an estate agent

www.hairandson.co.uk

Residential Sales

190 London Road
Southend-On-Sea
Essex SS1 1PJ

