



## Eastwood Lane South

Westcliff-on-Sea

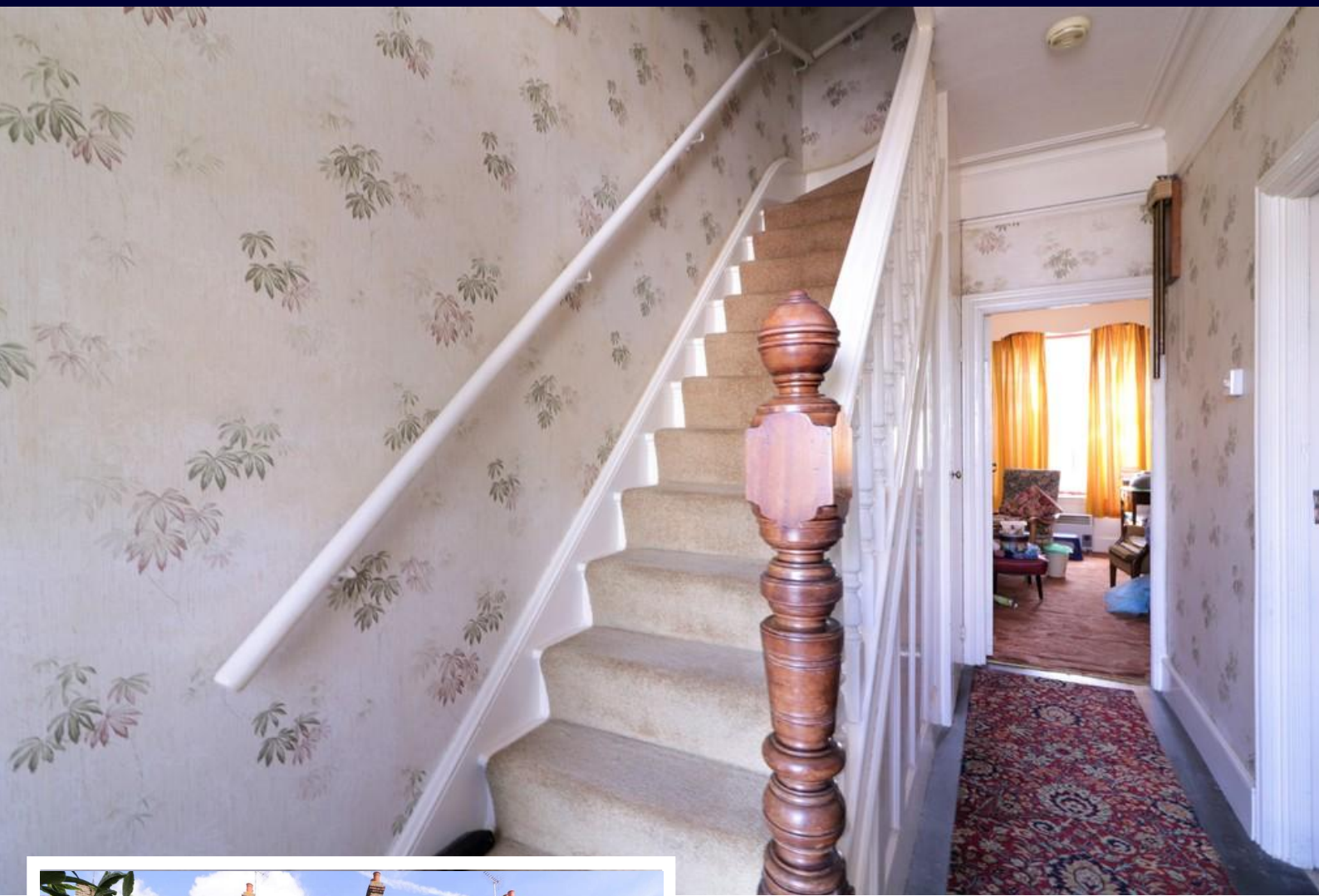
- MID TERRACED HOUSE
- THREE BEDROOMS
- TWO RECEPTION ROOMS
- UPSTAIRS THREE PIECE BATHROOM



## Guide Price £295,000

\*RENOVATION REQUIRED\* For the first time to the market in over 70 years is this mid terraced house situated in a sought after part of Westcliff-on-sea. With three bedrooms and bathroom, two reception rooms, kitchen & wc. Complete modernising is required but with many original features.





For the first time to the market in over 70 years is this mid terraced house situated in a popular part of Westcliff-on-sea which is nearby to Chalkwell Park and a range local schools.

Downstairs there are two reception rooms, a kitchen that provides access to the garden and a previously external wc that has been incorporated internally to the rear.

Upstairs there are three bedrooms and a three piece bathroom.

Complete modernisation is required throughout the house, including central heating. There is however double glazing to the rear including the kitchen door. There are many original features including the hallway flooring and multiple fireplaces.

A great opportunity to acquire this good size house in a sought after quiet location.

**HALLWAY**

15' 1" x 5' 9" (4.6m x 1.75m)

**LOUNGE**

16' 5" x 12' 2" (5m x 3.71m)

**DINING ROOM**

13' 9" x 8' 9" (4.19m x 2.67m)

**KITCHEN**

14' 2" x 6' 1" (4.32m x 1.85m)

**REAR LOBBY****WC****LANDING**

6' 9" x 6' 0" (2.06m x 1.83m)

**BEDROOM ONE**

16' 5" x 11' 2" (5m x 3.4m)

**BEDROOM TWO**

14' 3" x 9' 7" (4.34m x 2.92m)

**BEDROOM THREE**

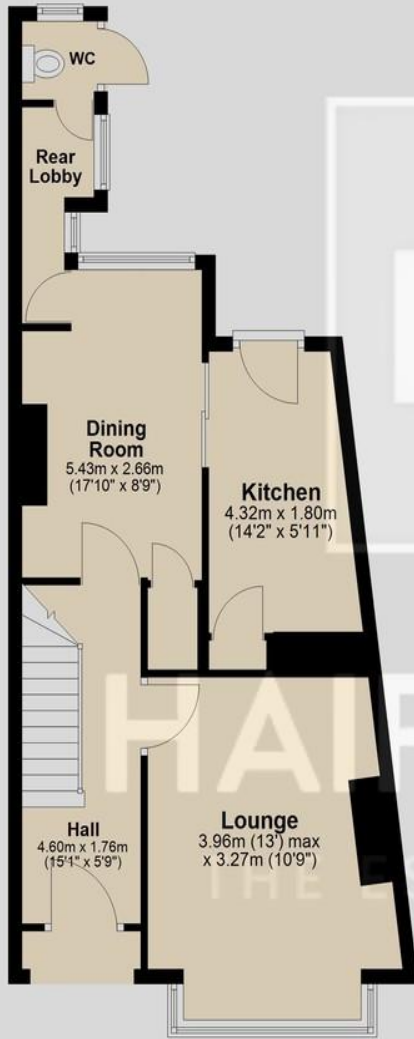
8' 5" x 6' 9" (2.57m x 2.06m)

**BATHROOM****REAR GARDEN**

These particulars are accurate to the best of our knowledge but do not constitute an offer or contract. Photos are for representation only and do not imply the inclusion of fixtures and fittings. The floor plans are not to scale and only provide an indication of the layout.

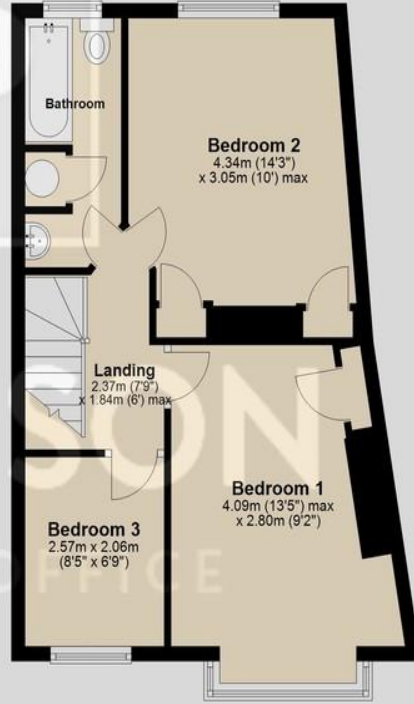
### Ground Floor

Approx. 49.7 sq. metres (535.3 sq. feet)



### First Floor

Approx. 43.3 sq. metres (465.6 sq. feet)



Total area: approx. 93.0 sq. metres (1000.9 sq. feet)

Regulated by RICS

t. 01702 34 11 77

More than an estate agent

[www.hairandson.co.uk](http://www.hairandson.co.uk)

**Residential Sales**  
190 London Road  
Southend-On-Sea  
Essex SS1 1PJ

