



Seaforth Avenue

Southend-on-Sea

- END TERRACE HOUSE
- THREE BEDROOMS
- TWO RECEPTION ROOMS
- KITCHEN/DINER



Guide Price £325,000

Hair & Son offer this end terrace house situated in the popular Southchurch area of Southend-on-sea. With three bedrooms, two reception rooms and kitchen/diner, wc/utility room, three piece bathroom, gas central heating and double glazing. Off street parking for two cars and 60ft rear garden.





Hair & Son offer this end of terrace house situated in the popular Southchurch area of Southend-on-sea.

With two reception rooms and an additional kitchen/diner that opens to the garden. The house also has the benefit of a handy wc/utility room.

Upstairs there are three bedrooms, two of which are doubles and a three piece bathroom.

The house is heated by a gas boiler and is fully double glazed.

Outside there is off street parking for two cars and a 60ft rear garden with a side access gate.

Conveniently located near to local shops, schools and walking distance Southend East train station.

Offered with no onward chain.



**HALL**

15' 7" x 5' 4" (4.75m x 1.63m)

LOUNGE

11' 8" x 10' 9" (3.56m x 3.28m)

RECEPTION ROOM

11' 6" x 10' 9" (3.51m x 3.28m)

KITCHEN

15' 5" x 11' 11" (4.7m x 3.63m)

UTILITY ROOM / WC

8' 1" x 5' 4" (2.46m x 1.63m)

LANDING**BEDROOM ONE**

12' 2" x 11' 0" (3.71m x 3.35m)

BEDROOM TWO

11' 6" x 11' 0" (3.51m x 3.35m)

BEDROOM THREE

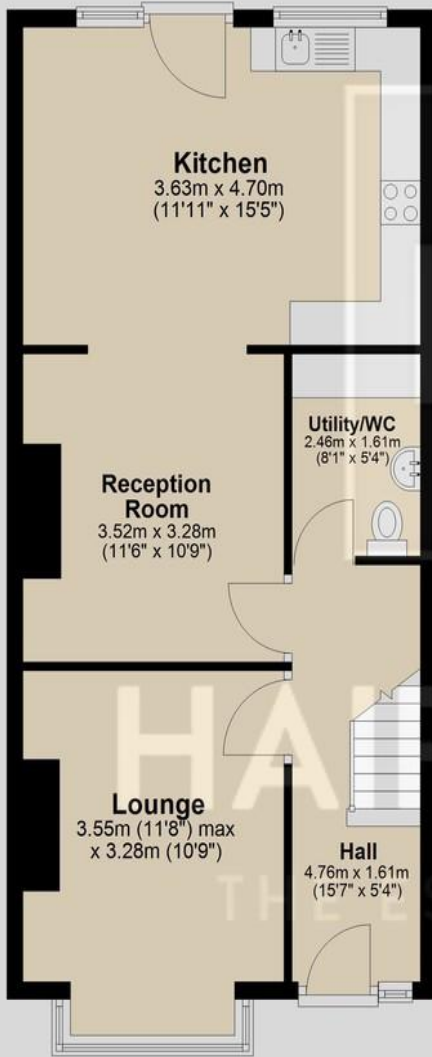
8' 1" x 5' 4" (2.46m x 1.63m)

BATHROOM**GARDEN**

These particulars are accurate to the best of our knowledge but do not constitute an offer or contract. Photos are for representation only and do not imply the inclusion of fixtures and fittings. The floor plans are not to scale and only provide an indication of the layout.

Ground Floor

Approx. 54.2 sq. metres (583.7 sq. feet)



First Floor

Approx. 37.4 sq. metres (402.4 sq. feet)



Total area: approx. 91.6 sq. metres (986.2 sq. feet)

Regulated by RICS

t. 01702 34 11 77

More than an estate agent

www.hairandson.co.uk

Residential Sales
190 London Road
Southend-On-Sea
Essex SS1 1PJ

