



Zeus Road

Southend-on-Sea

- GROUND FLOOR APARTMENT
- MODERN QUIET DEVELOPMENT
- TWO BEDROOMS
- EN-SUITE SHOWER ROOM



Guide Price £225,000

GROUND FLOOR This ground floor apartment set in a quiet modern development has the benefit of an en-suite shower, a good size lounge and kitchen with appliances, three piece bathroom and a patio from the lounge. With gas central heating, allocated parking and no onward chain.





This ground floor apartment is set in a quiet modern development and is within walking distance to Southchurch park, Southend seafront and train station to London Fenchurch Street.

With two bedrooms one of which has an en-suite shower room, a good size lounge/diner with direct access to a patio, a kitchen with built in washing machine, dishwasher, fridge-freezer and oven with gas hob and extractor.

There is also a three piece bathroom suite, gas central heating, double glazing and allocated parking.

In need of some re-decoration and offered with no onward chain.



HALL

ENSUITE

5' 1" x 5' 10" (1.55m x 1.78m)

BEDROOM ONE

8' 7" x 11' 2" (2.62m x 3.4m)

BEDROOM TWO

7' 2" x 11' 2" (2.18m x 3.4m)

LOUNGE

15' 1" x 15' 4" (4.6m x 4.67m)

KITCHEN

6' 4" x 10' 6" (1.93m x 3.2m)

BATHROOM

6' 4" x 6' 8" (1.93m x 2.03m)

LEASE

The following information has been provided by the seller:

Lease - 983 Years remaining.

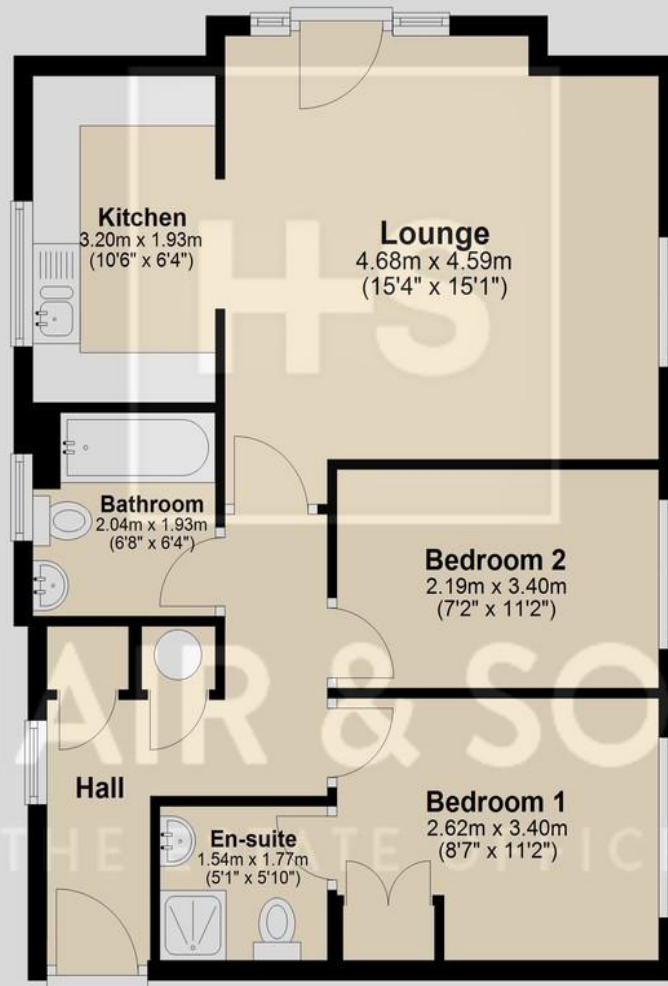
Council Tax Band C.

These particulars are accurate to the best of our knowledge but do not constitute an offer or contract. Photos are for representation only and do not imply the inclusion of fixtures and fittings. The floor plans are not to scale and only provide an indication of the layout.



Ground Floor

Approx. 56.0 sq. metres (602.3 sq. feet)



Total area: approx. 56.0 sq. metres (602.3 sq. feet)

Regulated by RICS

t. 01702 34 11 77

More than an estate agent

www.hairandson.co.uk

Residential Sales
190 London Road
Southend-On-Sea
Essex SS1 1PJ

