



## Hockley Road

Rayleigh

- RETIREMENT LIVING
- VACANT
- LIFT SERVICE
- MINUTES TO THE TOWN CENTRE



## Guide Price £110,000

Beautifully presented one bedroom retirement flat ready just to move into. Immaculately kept with a modern kitchen with appliances and luxury shower room. Just a short stroll to the fabulous Historic Rayleigh Town Centre with cafes local pubs and an excellent variety of shops.





#### **AGENTS NOTES**

VACANT one bedroom first floor retirement flat set in a most desirable location and setting just off Rayleigh Town Centre it couldn't be better placed.

Beautifully kept apartment as is the whole complex with a comfortable relaxed feel.

There is a site manager on hand and full lift service to all floors.

The apartment offers a well fitted kitchen with integrated appliances including fridge freezer, microwave, hob and oven, plenty of storage cupboard space and communal laundry room on the ground floor.

Extensive rear garden easily accessed. Suitable for the over 55s.



## HALL

## LIVING ROOM

15' 0" x 9' 4" (4.57m x 2.84m)

## KITCHEN

8' 6" x 7' 8" (2.59m x 2.34m)

## BEDROOM ONE

11' 0" x 9' 0" (3.35m x 2.74m)

## SHOWER ROOM



## COMMUNIAL GARDENS

## PARKING

## LEASE

Service charge - £3,681.33 per annum.

Council tax band B.

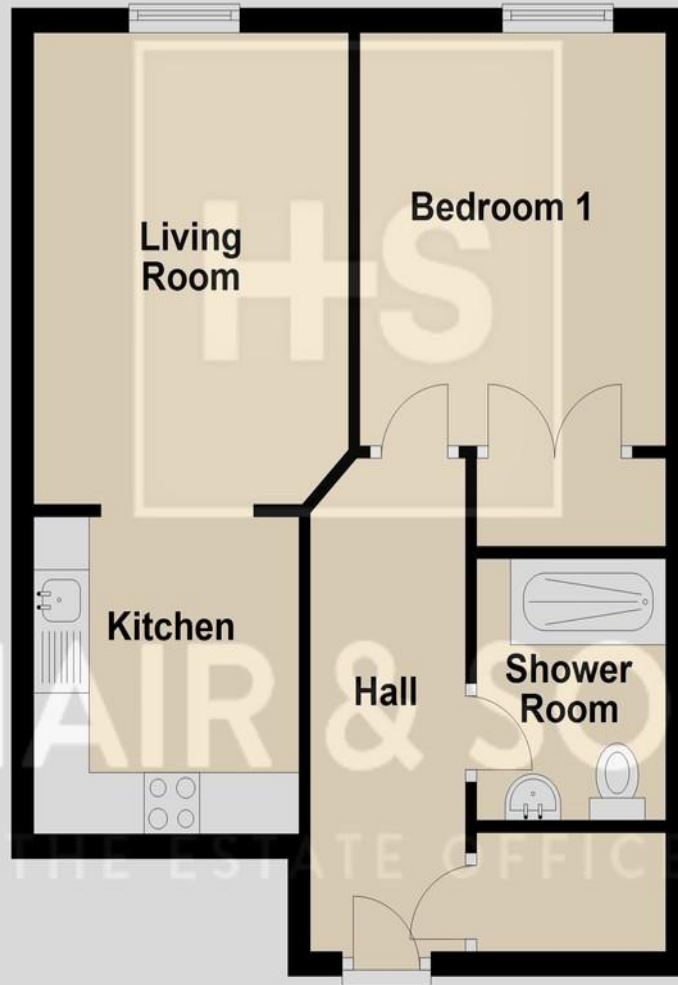
EPC rating B.

These particulars are accurate to the best of our knowledge but do not constitute an offer or contract. Photos are for representation only and do not imply the inclusion of fixtures and fittings. The floor plans are not to scale and only provide an indication of the layout.



## First Floor

Approx. 40.2 sq. metres



Total area: approx. 40.2 sq. metres

Regulated by RICS

t. 01268 774316

More than an estate agent

[www.hairandson.co.uk](http://www.hairandson.co.uk)

### Residential Sales

6 High Street  
Rayleigh  
Essex SS6 7EF

