



Mortimer Road

Rayleigh

- LARGE GARDEN
- TWO BEDROOMS
- QUIET YET CONVENIENT LOCATION
- MODERN KITCHEN AND BATHROOM



Guide Price £325,000 - £350,000

Charming two bedroom cottage with a large garden situated in a quiet yet convenient location for Rayleigh Station and local shops and buses. The Cottage offers two reception rooms, modern kitchen and bathroom to the first floor. Gas heating and double glazing. Great area for schools.





AGENTS NOTES

Spectacular and charming two bedroom cottage 25 minute walk to Rayleigh Station and High Street and located for easy access to routes to Chelmsford, Wickford and surrounding areas.

The cottage nestles in a quiet lane with local shops and buses just minutes away together with a popular golf course. Local schools include Down Hall Primary and The Sweyne Park School both highly sought after in the area.

The property itself enjoys a large rear garden, gas central heating and double glazing. Complimented by two reception rooms and modern kitchen to the ground floor as well as two bedrooms and a family bathroom on the first floor. There is an open fireplace to the main living room and lots of original character.



PORCH

LIVING ROOM

13' 0" x 10' 0" (3.96m x 3.05m)

DINING ROOM

13' 0" x 10' 0" (3.96m x 3.05m)

KITCHEN

12' 3" x 6' 3" (3.73m x 1.91m)

LANDING

BEDROOM ONE

11' 0" x 10' 0" (3.35m x 3.05m)

BEDROOM TWO

10' 2" x 5' 1" (3.1m x 1.55m)

BATHROOM

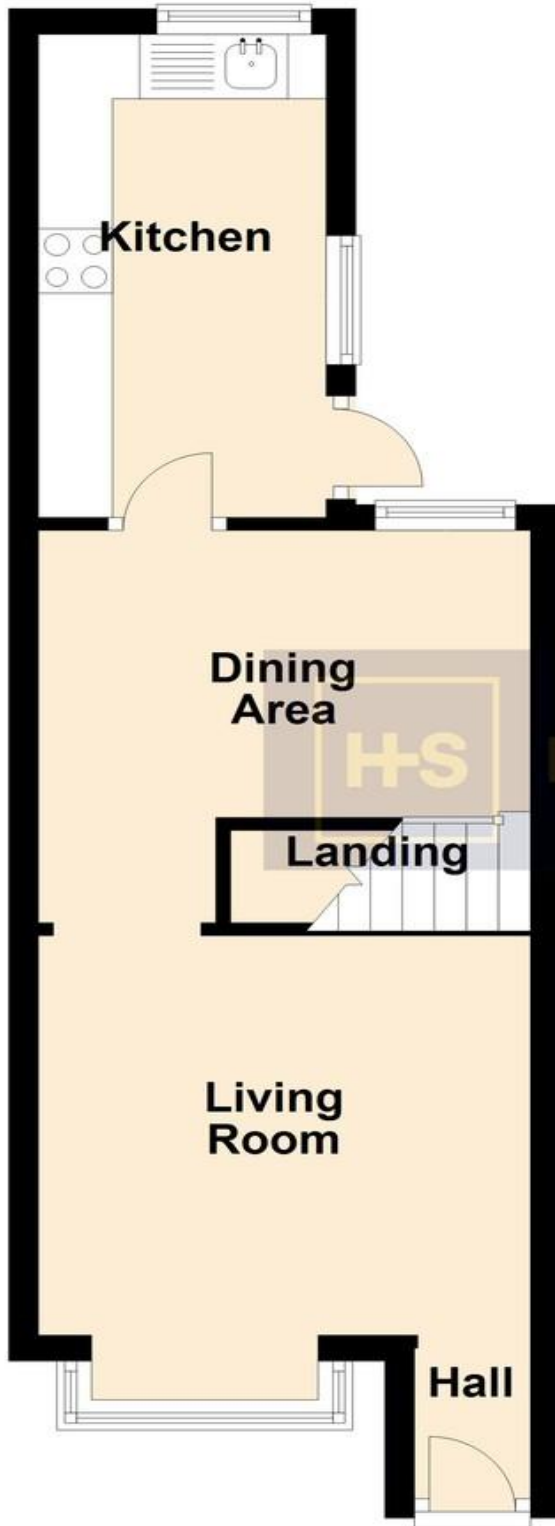
GARDEN

These particulars are accurate to the best of our knowledge but do not constitute an offer or contract. Photos are for representation only and do not imply the inclusion of fixtures and fittings. The floor plans are not to scale and only provide an indication of the layout.



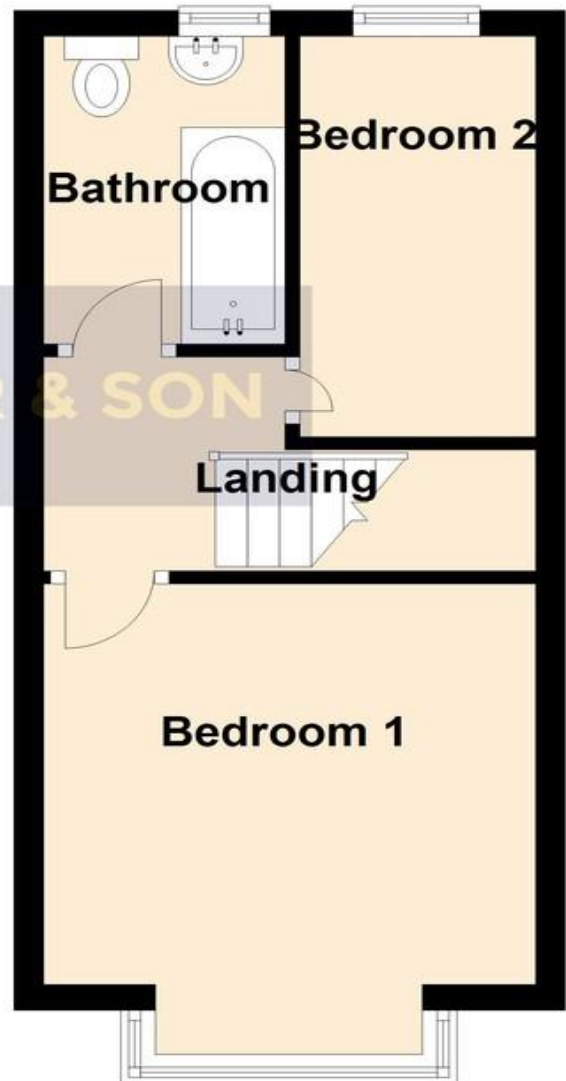
Ground Floor

Approx. 29.5 sq. metres



First Floor

Approx. 24.9 sq. metres



Total area: approx. 54.4 sq. metres
31 Mortimer Road, Rayleigh

Regulated by RICS

t. 01268 774316

More than an estate agent

www.hairandson.co.uk

Residential Sales
6 High Street
Rayleigh
Essex SS6 7EF

