



HAIR & SON
THE ESTATE OFFICE

Sheridan Close

Rayleigh

- GROVE SCHOOL CATCHMENT
- GROUND FLOOR CLOAKROOM
- NO ONWARD CHAIN
- EXTENDED TO THE REAR.

Guide Price £375,000

Offered with vacant possession. Nicely presented extended three bedroom home with double glazing and gas central heating. Grove School catchment. Long driveway to a large garage 23' x 9'2". Ground floor cloakroom and first floor bathroom. In need of some updating.





HALLWAY

CLOAKROOM

LIVING ROOM

14' 6" x 10' 7" (4.42m x 3.23m)

DINING AREA

13' 3" x 9' 5" (4.04m x 2.87m)

SITTING ROOM

9' 5" x 8' 0" (2.87m x 2.44m)

KITCHEN BREAKFAST ROOM

19' 9" x 8' 7" (6.02m x 2.62m)

LANDING

BATHROOM



BEDROOM ONE

14' 0" x 11' 0" (4.27m x 3.35m)

BEDROOM TWO

11' 5" x 11' 0" (3.48m x 3.35m)

BEDROOM THREE

8' 7" x 6' 10" (2.62m x 2.08m)

GARDEN

60' west backing.



GARAGE

23' 8" x 9' 2" (7.21m x 2.79m)

AGENTS NOTES

Fresh to the market an impressive three bedroom semi detached extended home with a long driveway and garage. The property enjoys a 60' garden west backing. Prime location for Grove School and local amenities all close and easy to hand. The main accommodation enjoys a good size living room which has had an addition to the rear, with a ground floor cloakroom. Double Glazing and gas central heating with a modern combination boiler. Three bedrooms and bathroom to the first floor.



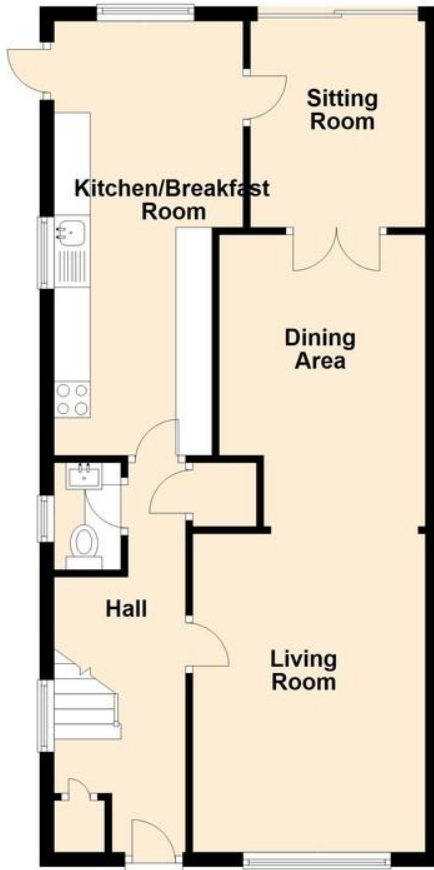
Long driveway providing plenty of off road parking leading to a very large detached brick built garage.

These particulars are accurate to the best of our knowledge but do not constitute an offer or contract. Photos are for representation only and do not imply the inclusion of fixtures and fittings. The floor plans are not to scale and only provide an indication of the layout.



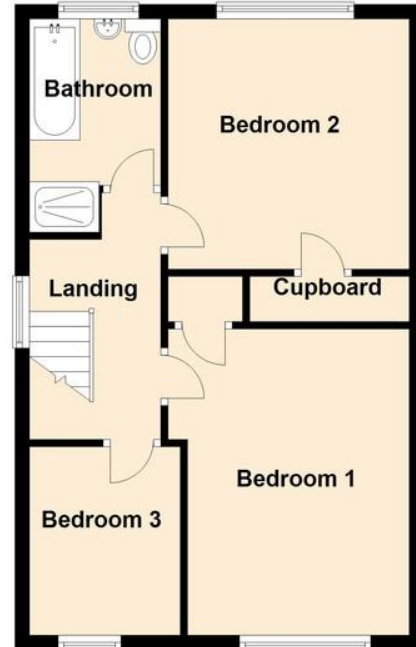
Ground Floor

Approx. 59.3 sq. metres (638.2 sq. feet)

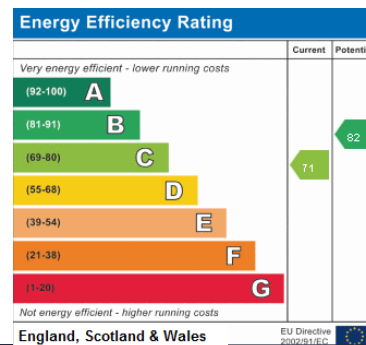


First Floor

Approx. 45.0 sq. metres (484.3 sq. feet)



Total area: approx. 104.3 sq. metres (1122.5 sq. feet)



Regulated by RICS

t. 01702 34 11 77
More than an estate agent
www.hairandson.co.uk

Residential Sales
 190 London Road
 Southend-On-Sea
 Essex SS1 1PJ

