



**HAIR & SON**  
THE ESTATE OFFICE

## Valkyrie Road

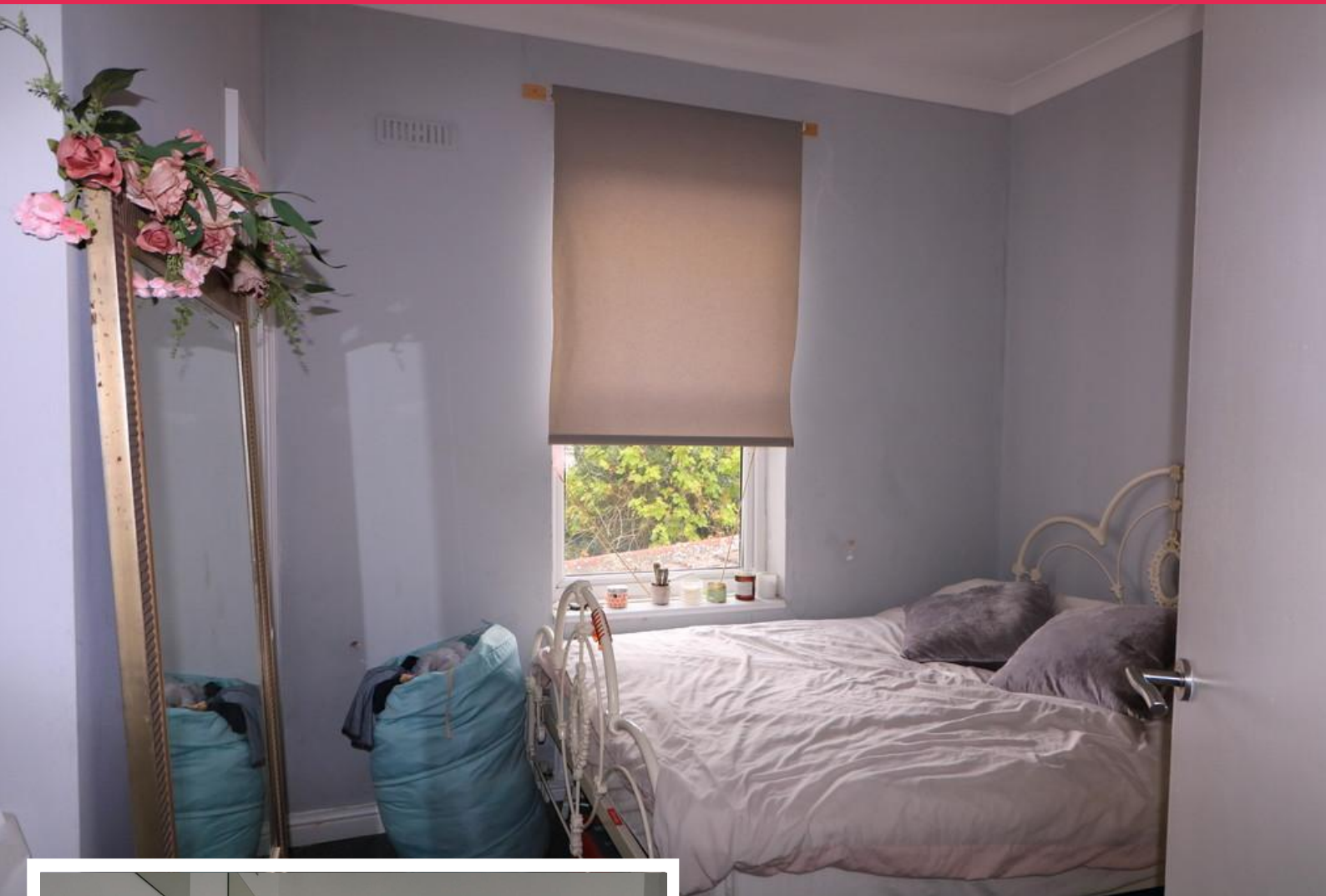
Westcliff-on-Sea

- First Floor Rear Flat
- One Bedroom
- No Chain
- Own Garden

**£149,995**

Located just across from Westcliff Mainline Rail Station (providing C2C services to London Fenchurch Street) is this first floor rear flat with own section of garden.





A one bedroom first floor flat located to the rear of the building so enjoying a quiet aspect. Maintained in good order with modern kitchen and shower room, it is a great opportunity for a first purchase or buy to let investment.

Valkyrie Road is just minutes to the station and a short walk to all amenities of Hamlet Court Road.

#### **COMMUNAL ENTRANCE HALL**

#### **DOOR TO HALL**

#### **HALLWAY**

#### **LOUNGE**

12' 8" x 10' 4" (3.86m x 3.15m)

#### **KITCHEN**

12' 8" x 5' 2" (3.86m x 1.57m)

## **BEDROOM**

9' 2" x 9' 0" (2.79m x 2.74m)

## **SHOWER ROOM**

## **OWN SECTION OF GARDEN**

These particulars are accurate to the best of our knowledge but do not constitute an offer or contract. Photos are for representation only and do not imply the inclusion of fixtures and fittings. The floor plans are not to scale and only provide an indication of the layout.

## First Floor

Approx. 32.4 sq. metres (348.7 sq. feet)



Total area: approx. 32.4 sq. metres (348.7 sq. feet)

Regulated by RICS

t. 01702 34 11 77

More than an estate agent

[www.hairandson.co.uk](http://www.hairandson.co.uk)

**Residential Sales**  
190 London Road  
Southend-On-Sea  
Essex SS1 1PJ

