



HAIR & SON
THE ESTATE OFFICE

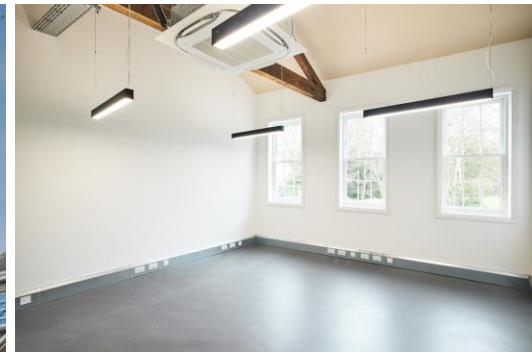
OFFICE 2 Summit House

CHELMSFORD TOWN CENTRE CM1 1BD

HIGH SPECIFICATION OFFICE TO LET

290 SQ.FT. (27 SQ.M)

– CENTRAL CHELMSFORD



RENT £8,500 PAX
£708 PCM

SITUATION AND DESCRIPTION

We are pleased to offer to let on the open market these three re-fitted high end office suites in Central Chelmsford. The accommodation has been refurbished to a high standard and an early inspection is recommended to appreciate the accommodation provided.

The suite is within Summit House, which is a purpose-built office building close to Bond Street and John Lewis, opposite Chelmsford Cathedral.

The shared entrance hall has a platform passenger lift to the elevated ground floor level and a passenger lift serving the upper floors.

This is one of three refurbished office suites on the first floor which benefit from newly installed air conditioning, there is an attractive kitchen and staff / waiting area. for use of the occupiers of these three offices.

INTERNAL INSPECTION - HIGHLY RECOMMENDED

ACCOMMODATION

A single office - 290 sq.ft.

Shared kitchen, staff / waiting area

DESCRIPTION

HIGH SPECIFICATION OFFICE - CENTRAL CHELMSFORD

RATEABLE VALUE

The rateable value is to be advised

TERMS

The premises are to let

VIEWING

Prior telephone appointment with Hair and Son:
01702 39 49 59 (Option 3)

Hair & Son – 01702 394959

www.hairandson.co.uk

These particulars are accurate to the best of our knowledge but do not constitute an offer or contract.
Photos are for representation only and do not imply the inclusion of fixtures or fittings.
The floorplans are not to scale and only provide an indication of the layout.

Regulated by RICS

t. 01702 394959

More than an estate agent

www.hairandson.co.uk

Commercial Dept.
186 London Road
Southend-on-Sea,
Essex. SS1 1PJ

