



HAIR & SON
THE ESTATE OFFICE

North Avenue

Southend-on-Sea, SS2 5HU

- THREE DOUBLE BEDROOMS
- NEW FITTED KITCHEN
- 50' REAR GARDEN
- CENTRAL SOUTHEND LOCATION

£900 pcm

A newly refurbished three bedroomed mid terrace house in central Southend, benefitting from gas central heating, double glazing, new kitchen, bathroom and carpets throughout.





ENTRANCE HALL

Upvc double-glazed door to entrance hall, decorative plaster coving, newly laid carpet, doors to:

LOUNGE

13' 4" x 10' 8" (4.06m x 3.25m) uPVC double glazed bay window to front, thermostatic radiator to rear, newly laid carpet.

DINING ROOM

11' 5" x 11' 0" (3.48m x 3.35m) uPVC double glazed window to rear overlooking garden and sidweay, thermostatic radiator to side, access to under stairs storage cupboard, newly laid carpet.

KITCHEN

10' 0" x 8' 5" (3.05m x 2.57m) uPVC double glazed window to side. Newly fitted base and eye level units with splash tiling surrounding new rolled edge counters, "Lamona" electric oven and hob with extractor hood over. Newly laid slate tile effect vinyl. Upvc double-glazed door providing access to rear garden. Door to stairs.

BATHROOM/WC

10' 0" x 4' 3" (3.05m x 1.3m) uPVC double glazed windows to side and rear, Thermostatic radiator to rear. Half tiled in white with a new white suite comprised of a pedestal basin, low flush WC and a paneled bath with a "Triton" electric shower and a perspex shower screen. Combination boiler. Newly laid slate tile effect vinyl.

BEDROOM 1

14' 0" x 11' 5" (4.27m x 3.48m) Three uPVC double glazed windows to front, thermostatic radiator to side, newly laid carpet. Door to fitted wardrobe space.

BEDROOM 2

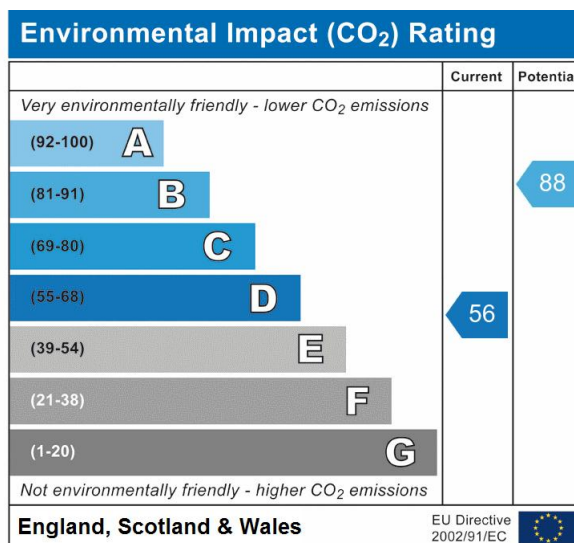
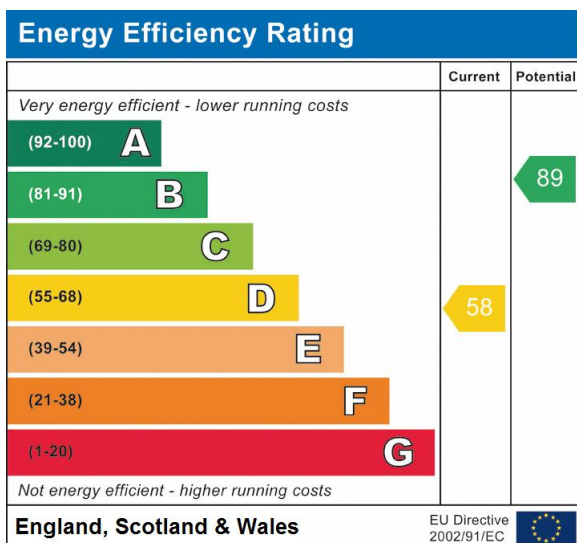
11' 5" x 11' 0" (3.48m x 3.35m) uPVC double glazed window to rear overlooking garden and sideway. Door to fitted wardrobe space. newly laid carpet.

ADJOINING BEDROOM

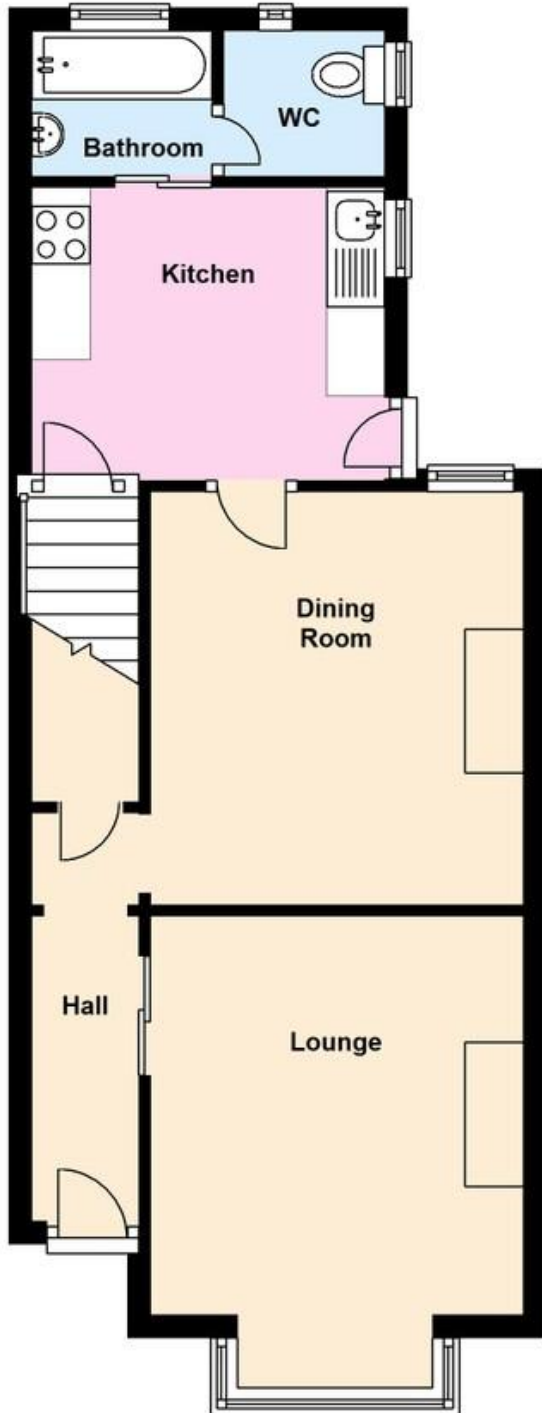
13' 0" x 10' 0" (3.96m x 3.05m) uPVC double glazed window to rear overlooking garden, thermostatic radiator to side, newly laid carpet.

GARDEN

50' (15.24m In excess of 50' . Laid to lawn with small patio area, shrubs and borders.



Ground Floor



First Floor



t. 01702 34 11 77

More than an estate agent

www.hairandson.co.uk

Residential Lettings

190 London Road

Southend-On-Sea

Essex

SS1 1PJ

