



HAIR & SON
THE ESTATE OFFICE

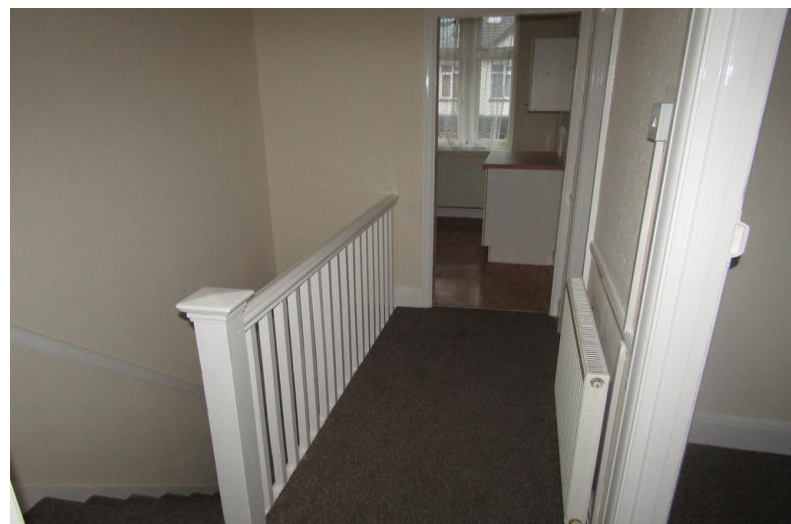
Lonsdale Road

SOUTHEND-ON-SEA, SS2 4LP

- ONE BEDROOM
- FIRST FLOOR
- KITCHEN
- BATHROOM/WC

£625 pcm

A first floor ONE BEDROOM flat that has been re-decorated with gas radiator heating, kitchen, bathroom with three piece white suite, lounge and own section of rear garden. Available Immediately. No pets. Working applicants only. No housing benefits or top ups. No Smokers.





A first floor ONE BEDROOM flat that has been re-decorated with gas radiator heating, kitchen, bathroom with three piece white suite, lounge and own section of rear garden. Available Immediately. No pets. Working applicants only. No housing benefits or top ups. No Smokers

ENTRANCE HALL

Communal entrance with individual wooden street door. Stairs leading to

LOUNGE

14' 03" x 12' 05" (4.34m x 3.78m) uPVC Double Glazed Floating Bay Window to front. Double radiator. TV point. Power points. Carpet.

KITCHEN

12' 08" x 6' 03" (3.86m x 1.91m) uPVC Double glazed Oriel window to front. Wall mounted gas boiler. Ground and wall mounted units with inset single bowl single drain stainless steel sink. Double radiator. Space for washing machine. Space for free standing gas oven. Space for standing fridge/freezer. Power Points. Vinyl flooring.



BEDROOM

12' 09" x 11' 08" (3.89m x 3.56m) White double glazed UPVC window to rear. Radiator. Power points.

BATHROOM/WC

Obscure uPVC double glazed window to rear. Pedestal wash hand basin with separate taps. White paneled bath with separate taps and white tile surround. Low flush W/C. Airing cupboard. Radiator. Vinyl flooring.

OWN SHARE OF REAR GARDEN

Laid to lawn with privacy fencing. Approached via side access externally only



These particulars are accurate to the best of our knowledge but do not constitute an offer or contract. Photos are for representation only and do not imply the inclusion of fixtures and fittings. The floor plans are not to scale and only provide an indication of the layout.



t. 01702 34 11 77

More than an estate agent

www.hairandson.co.uk

Residential Lettings

190 London Road
Southend-On-Sea
Essex
SS1 1PJ

