



HAIR & SON
THE ESTATE OFFICE

9B THE WILLOWS CENTRE,
WICKFORD, SS12 0RA

LOCK UP SHOP - TO LET
155 SQ.M (14 SQ.M)



RENT £5,500 PA + VAT
£458 PCM + VAT

SITUATION AND DESCRIPTION

Hair & Son are offering to let this small lock up retail premises within The Willows Shopping Centre. They comprise a retail shop with an internal W/C. The shop has a carpeted floor, suspended ceiling and an external electric roller shutter.

It is located towards the rear of the Centre but has frontage opposite the Wickford Community Centre car park and fronting a pedestrian thoroughfare to the High Street. A variety of retail uses would be considered, subject to the landlords consent.

****FLEXIBLE LEASE TERMS****

ACCOMMODATION

MAIN SALES AREA: 16'2" X 9'5"

W/C

GROSS INTERNAL FLOOR AREA: 155 SQ.FT (14.4 SQ.M)

DESCRIPTION

A small lock up premises within The Willows Shopping Centre.

RATEABLE VALUE

The rateable value is £7,900 which is chargeable at 48p. in the pound for the rating year to April 2019. Small business rates relief may apply.

ENERGY PERFORMANCE

The energy performance Certificate shows a rating of TBC

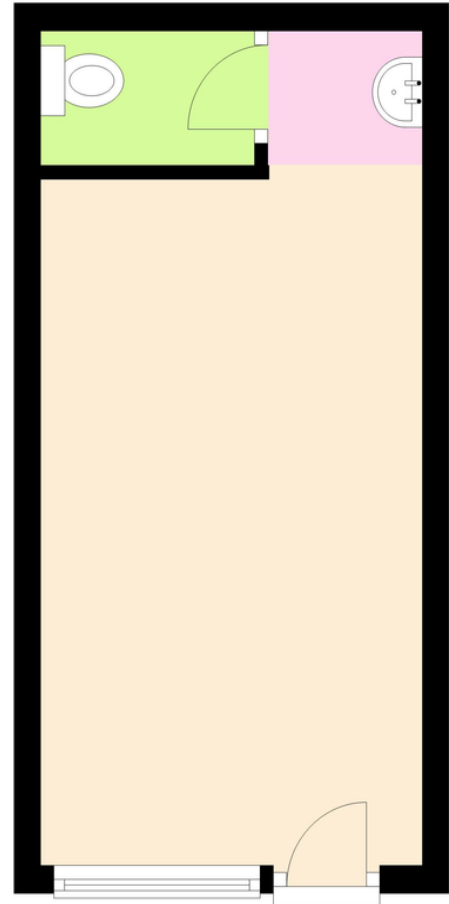
TERMS

The premises are to let on a new full repairing and insuring lease for a term to be agreed at a rent of £5,500 per annum + VAT.

VIEWING

By prior appointment with Hair & Son: 01702 394959.

Ground Floor



Shared marketing with LCP Properties

Ed Mileham

0207 233 5255

20th Floor, Millbank Tower

Millbank

London

SW1P 4QP



Hair & Son – 01702 394959

www.hairandson.co.uk

These particulars are accurate to the best of our knowledge but do not constitute an offer or contract. Photos are for representation only and do not imply the inclusion of fixtures or fittings. The floorplans are not to scale and only provide an indication of the layout.

Regulated by RICS



t. 01702 394959

More than an estate agent

www.hairandson.co.uk

Commercial Dept.

186 London Road

Southend-on-Sea,

Essex. SS1 1PJ

